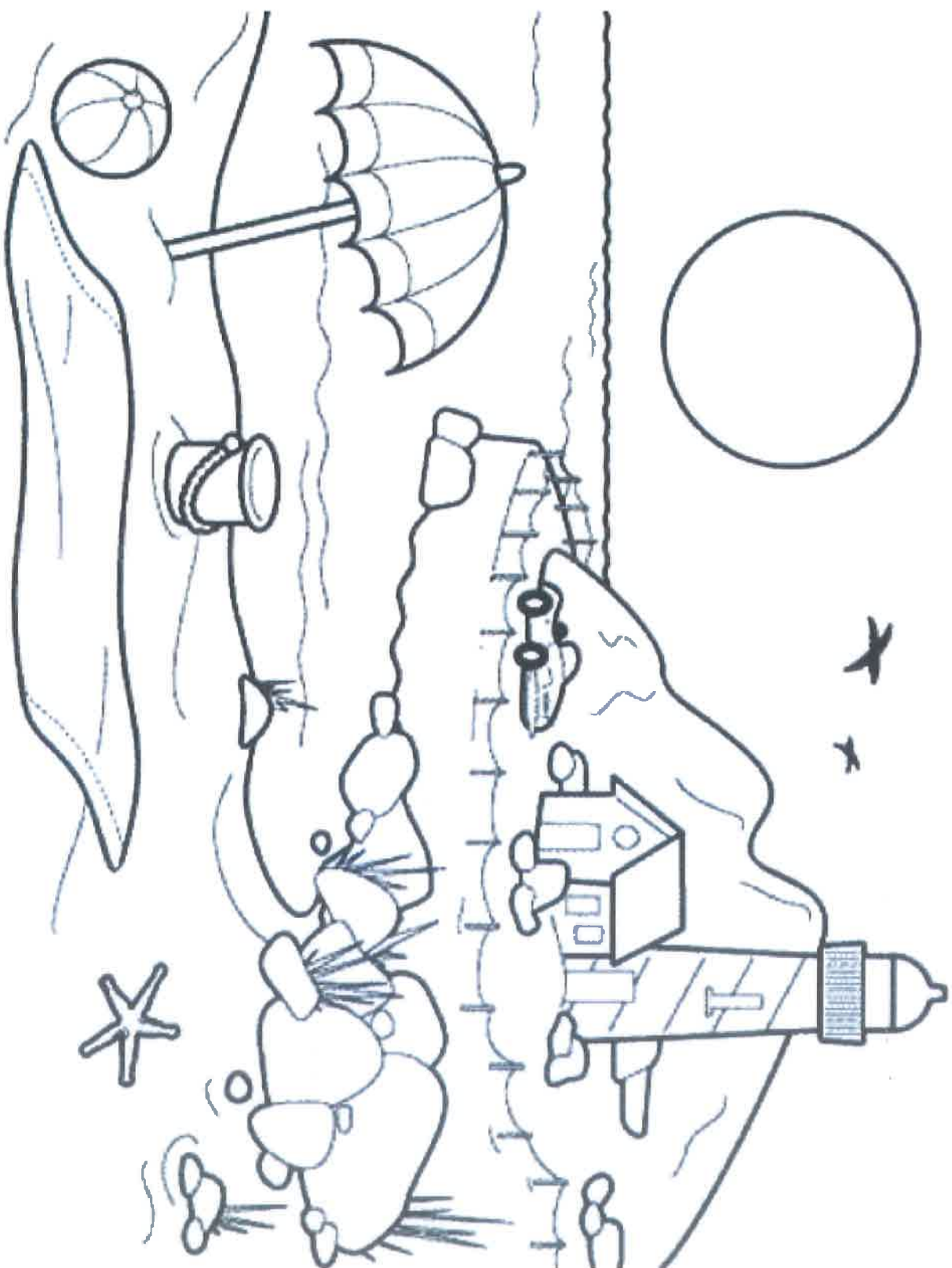


Can I add interesting descriptive vocabulary?

Label this picture with good descriptive adjectives and adverbs to help with a description of a sea shore tomorrow. The more vocabulary you write down now the easier your writing will be. E.g. rolling waves, whistling breeze, softly rippled, lazily glided.



What makes a situation an emergency?

What people do we need in our world today?
Why?



What emergency services do you know?

"A personal emergency is when an event causes some kind of risk to someone's health or welfare and which cannot be dealt with using normal available resources."

Now look at the pictures below and decide which are an emergency and which are not.



Firefighters douse a fire in a block of flats in Beckham



Children play in the streets



Volcanic eruption, houses in the foreground © iStock / David Dargatzis

Now, complete the incident card below.

Emergency!

A cat is stuck up a tree!
Help is needed!



Which emergency services?

What equipment should they bring?

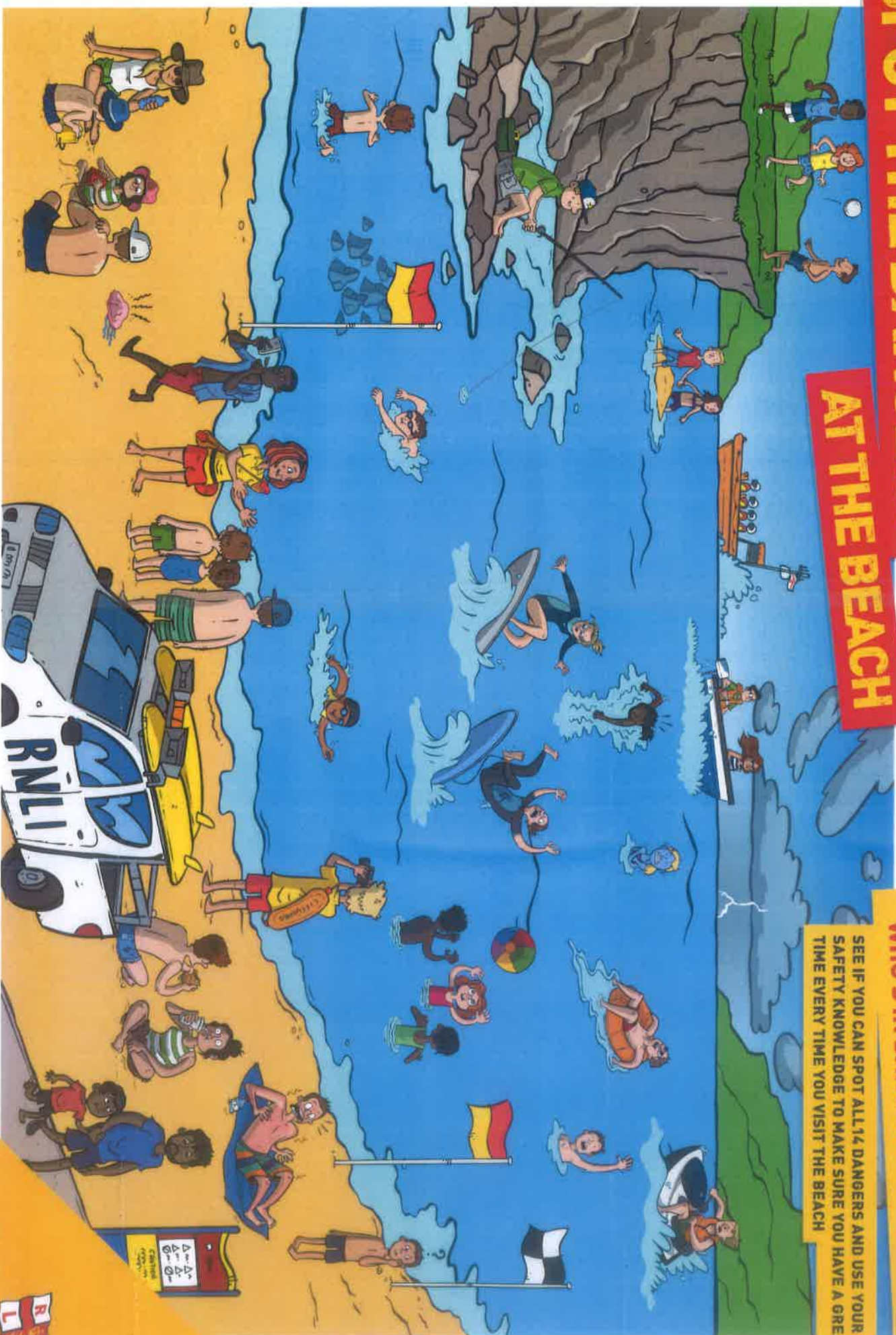
What can you do to help?

SPOT THE DANGERS

AT THE BEACH

WHO'S IN DANGER IN THIS SCENE?

SEE IF YOU CAN SPOT ALL 14 DANGERS AND USE YOUR SAFETY KNOWLEDGE TO MAKE SURE YOU HAVE A GREAT TIME EVERY TIME YOU VISIT THE BEACH



Lifeboats



What Does a Police Officer Do?

Police officers work with paramedics, firefighters and the coastguard to provide emergency assistance to people in need. If there is an emergency, by phoning 999, you will reach one of these services that will help you.

Great police officers are...

- brave
- strong
- friendly
- hardworking
- reliable
- honest



Police officers need to be ready for any situation. They need to be able to stay calm and think clearly. They also need to be able to communicate well with other people so that they can reassure people when they are upset or angry.

Where do they work?

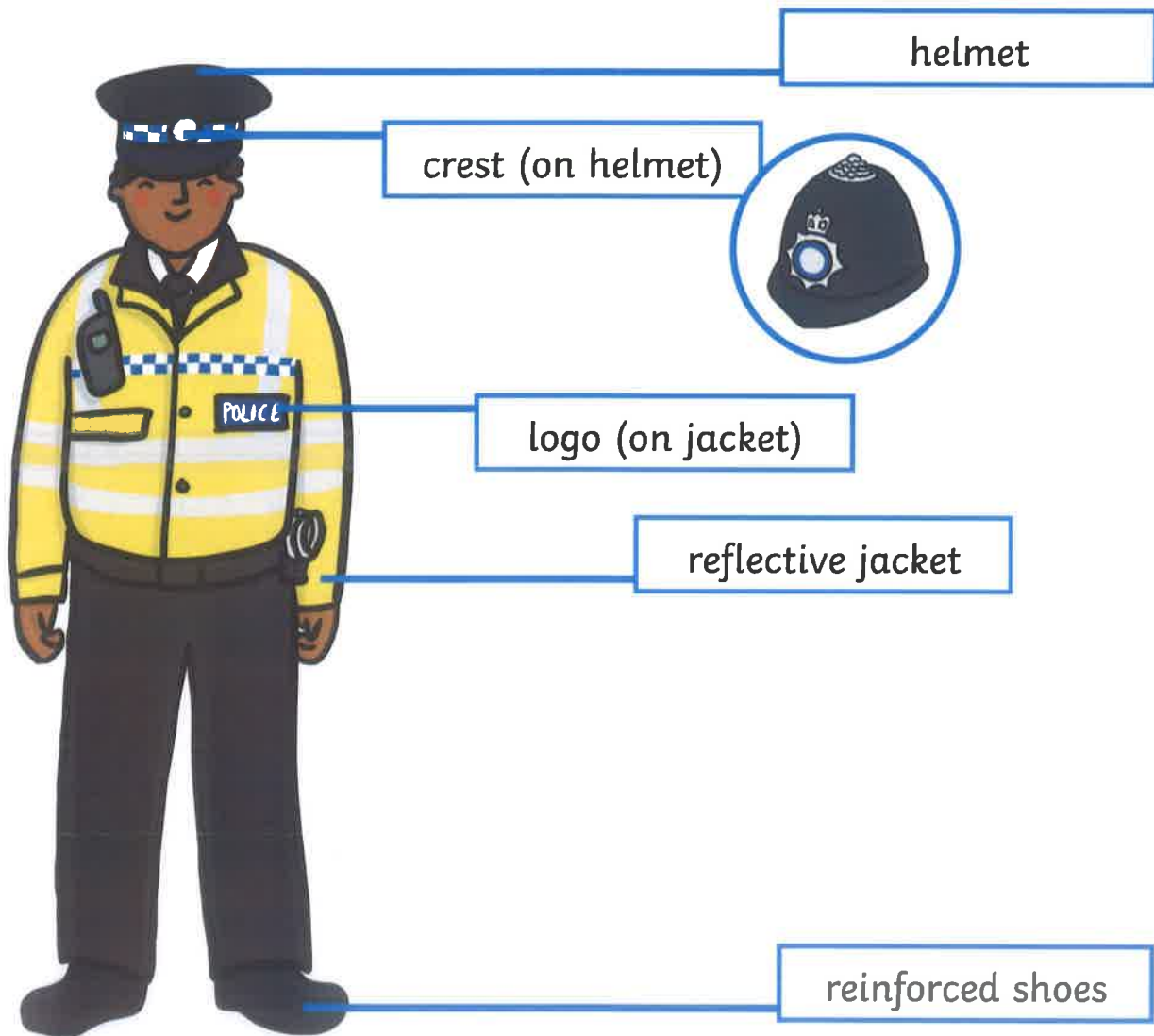
Police officers are usually based in the police station although they can be called for duty to just about anywhere! Animals are used to support police officers with their duties including dogs and horses. Horses are often used at large events where a police officer may need to see above the people in the crowd. They can then use their radios to pass messages on to other officers.

Police dogs use their amazing sense of smell to help find dangerous objects and chemicals. The dogs are specially trained and are even able to find people who are lost just by smelling their clothing.



What do police officers wear?

A formal uniform is worn by most police officers. This includes a hat that has a crest of the police force that they work in. Their jackets are high-visibility which makes it easy for people to see them. On their jackets, they have a clear police logo so that people can identify who they are.



How do you become a police officer?

Anyone wanting to become a police officer needs to complete a written test and prove that they are fit and healthy. You also need to have GCSE qualifications from secondary school.

What Does a Police Officer Do? Questions

Answer the questions below in full sentences.

1. Which animals are sometimes used by police officers?

2. What is on the crest on a police officer's helmet?

3. Name three things that a police officer might wear.

4. Why do police officers need to be good at communicating to others?

5. Why do police officers wear a logo on their jacket?

6. Why do police officers use horses?

7. Which pieces of equipment help a police officer at night?

8. If you had to design a new uniform for a police officer to wear, what piece of equipment would you include? Why?

What Does a Police Officer Do? **Answers**

1. Which animals are sometimes used by police officers?

Police officers sometimes use dogs and horses to help them with their duties.

2. What is on the crest on a police officer's helmet?

The crests represents the police force that they are part of.

3. Name three things that a police officer might wear.

Police officers wear a helmet, reflective jacket, reinforced shoes, trousers and shirt.

4. Why do police officers need to be good at communicating to others?

Police officers need to be good at communicating to others so that they can keep people calm when they are upset or angry.

5. Why do police officers wear a logo on their jacket?

Police officers wear a logo on their jackets so that people can identify who they are.

6. Why do police officers use horses?

Police officers use horses so that they can see over the top of crowds. They can then use their radios to pass messages to the other officers.

7. Which pieces of equipment help a police officer at night?

The light in their jacket so they can see what they are doing. The reflective strips on their jacket so that people can see them in the dark. Their radio so they can communicate with one another in dark places.

8. If you had to design a new uniform for a police officer to wear, what piece of equipment would you include? Why?

Pupil's own well-reasoned responses.



Name: _____ Class: _____

Draw a circle around the words with the 'wa' letter pattern in them.

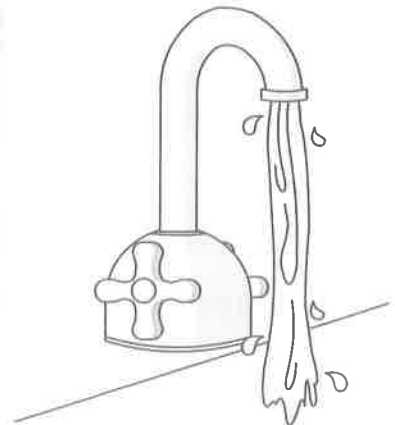
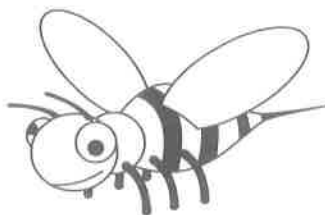
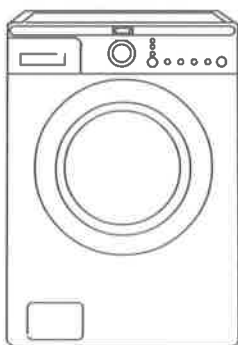
aware dwarf unwell awesome careful towards
sausage airwaves speaking railcard wearing sleepwalking
washing happy over backwards awake modern

Use a word with the 'wa' letter pattern to fill each space in these sentences.

- 1 The sign said '_____ of the dog!' so Sten decided not to go in.
- 2 Stig's mum decided to _____ the car because it was covered in mud.
- 3 Klara noticed a crack in her favourite mug as she loaded the dishes into the _____.
- 4 Manu was excited about getting an _____ at the football presentation evening.
- 5 The team did very well because the other team seemed to be barely _____.
- 6 Sten's grandad always travelled by train on holiday, he said it _____ the best _____ to see the countryside.



Look at the pictures and write the words.





To Protect and Inverse

Activity Sheet

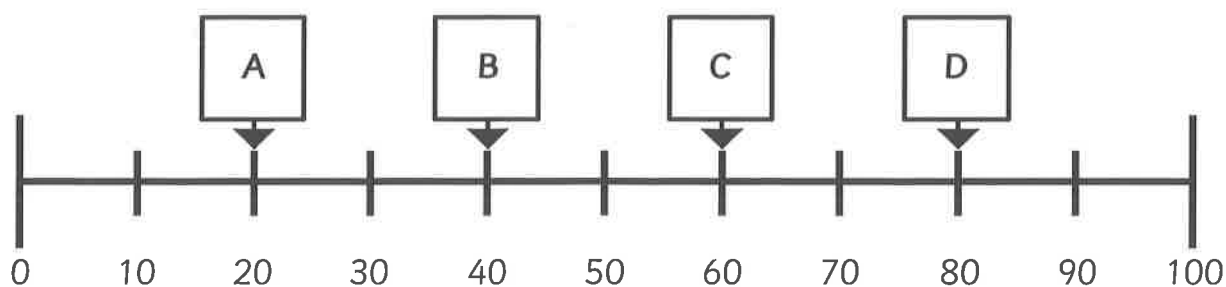


EducationCity.com

Name: _____

Class: _____

3



Select the letter that gives the best estimate for the calculation.

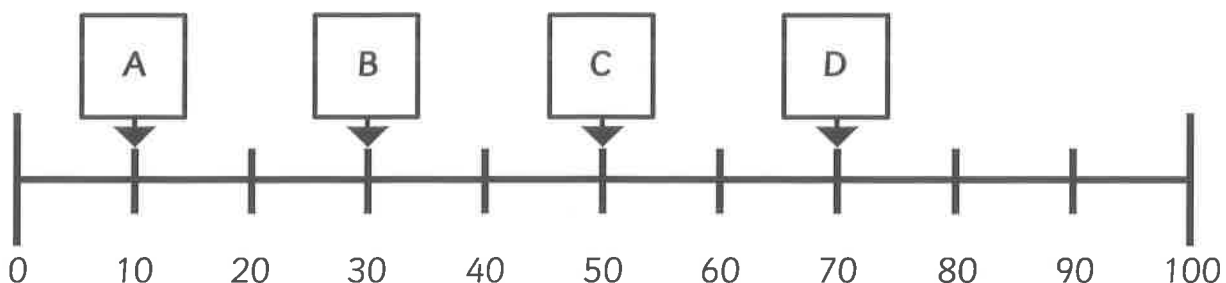
Estimate $69 + 12 =$ _____

Calculate $69 + 12 =$ _____

Check $69 + 12 =$ _____

	-	12	=	
	+		=	
	-		=	

4



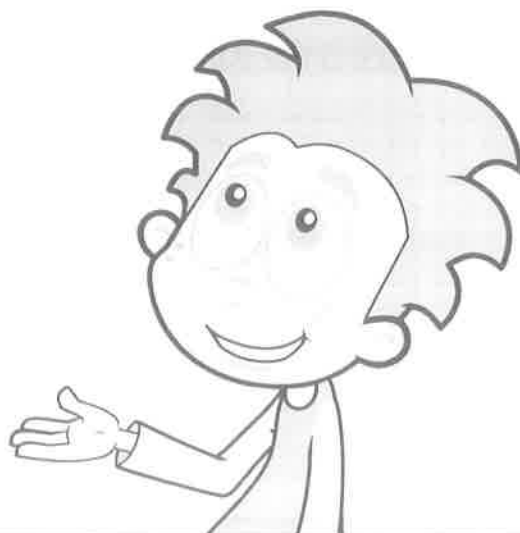
Select the letter that gives the best estimate for the calculation.

Estimate $56 - 29 =$ _____

Calculate $56 - 29 =$ _____

Check $56 - 29 =$ _____

	-	29	=	
	+		=	
	-		=	



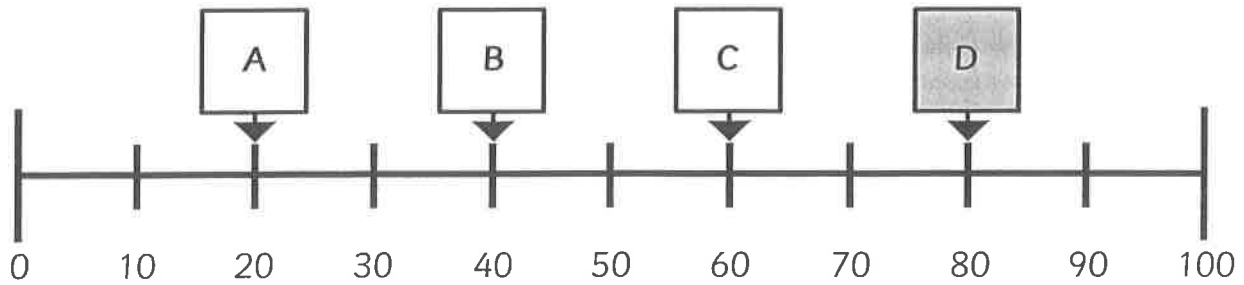


To Protect and Inverse

Activity Sheet

Name: _____ Class: _____

3



Select the letter that gives the best estimate for the calculation.

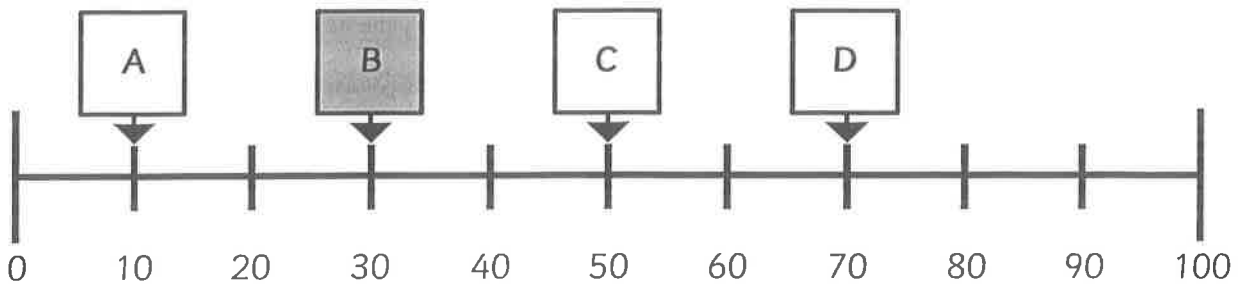
Estimate $69 + 12 =$ 80

Calculate $69 + 12 =$ 81

Check $69 + 12 =$ 81

81	-	12	=	69
12	+	69	=	81
81	-	69	=	12

4



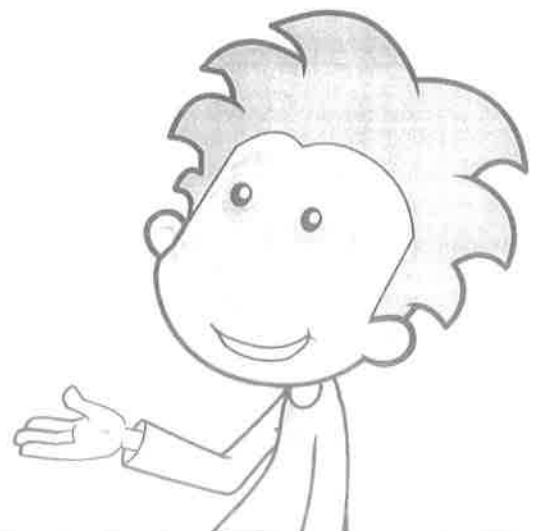
Select the letter that gives the best estimate for the calculation.

Estimate $56 - 29 =$ 30

Calculate $56 - 29 =$ 27

Check $56 - 29 =$ 27

56	-	29	=	27
29	+	27	=	56
56	-	29	=	27



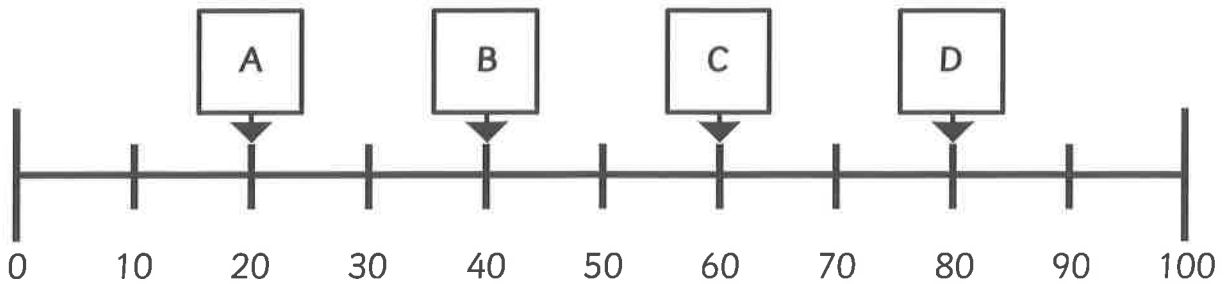


Name: _____

Class: _____

Complete the following calculations, by estimating, calculating and checking your answers, using a fact family.

1



Select the letter that gives the best estimate for the calculation.

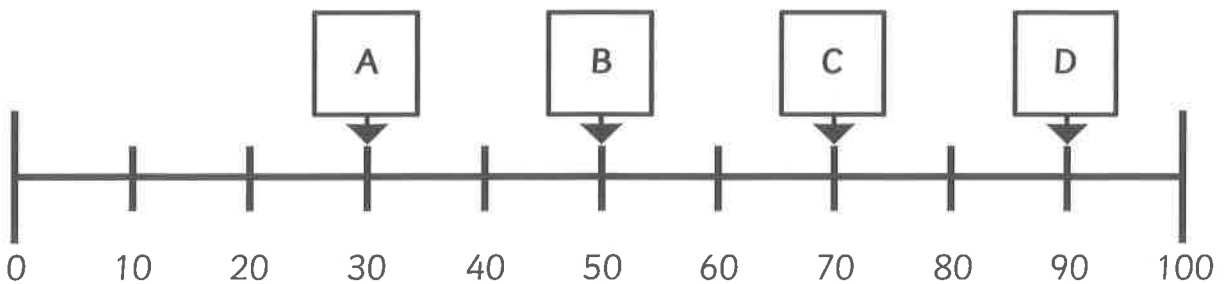
Estimate $78 - 41 =$ _____

Calculate $78 - 41 =$ _____

Check $78 - 41 =$ _____

	+	41	=	
	+		=	
	-		=	

2



Select the letter that gives the best estimate for the calculation.

Estimate $51 + 37 =$ _____

Calculate $51 + 37 =$ _____

Check $51 + 37 =$ _____

	-	37	=	
	+		=	
	-		=	



To Protect and Inverse

Activity Sheet



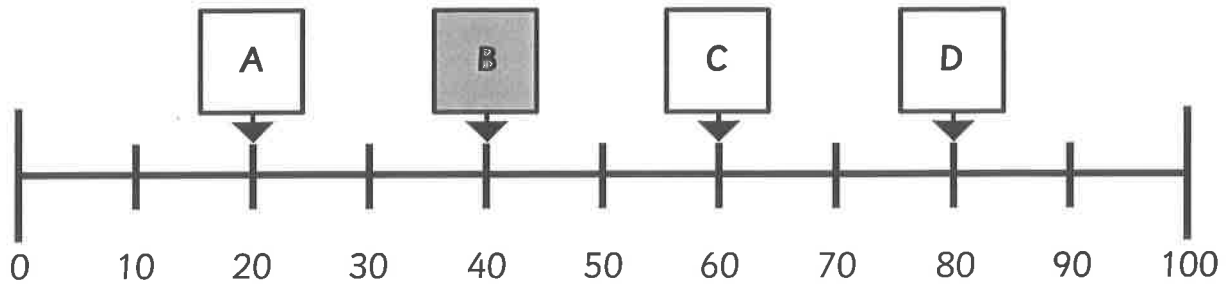
EducationCity.com

Name: _____

Class: _____

Complete the following calculations, by estimating, calculating and checking your answers, using a fact family.

1



Select the letter that gives the best estimate for the calculation.

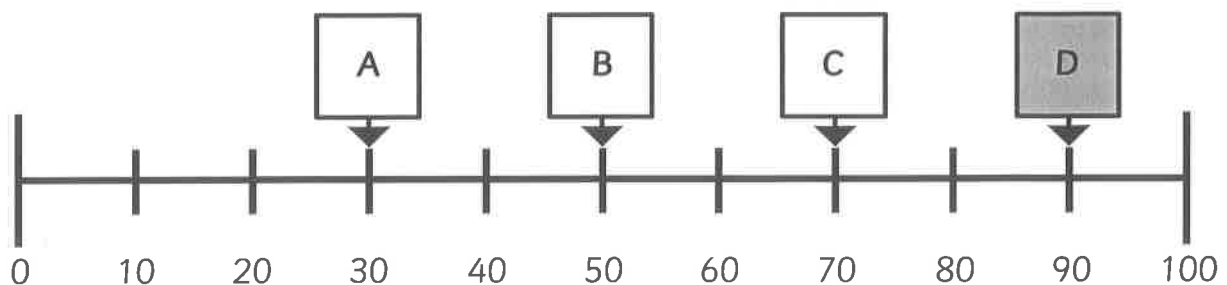
Estimate $78 - 41 =$ 40

Calculate $78 - 41 =$ 37

Check $78 - 41 =$ 37

37	+	41	=	78
41	+	37	=	78
78	-	37	=	41

2



Select the letter that gives the best estimate for the calculation.

Estimate $51 + 37 =$ 90

Calculate $51 + 37 =$ 88

Check $51 + 37 =$ 88

88	-	37	=	51
37	+	51	=	88
88	-	51	=	37

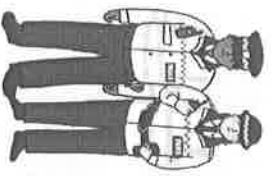
Can I Match the Warning Signs?

Match up the warning signs that keep us safe.

Word	Symbol	What does it mean?	Why do you need to avoid it?
Corrosive		Something that will eat through/wear away e.g. acid	It can be very painful and burn your skin/disfigure you.
Explosive		Something might blow up.	
Flammable		Something may catch fire easily.	
Harmful		Something that might hurt or kill you.	
No Smoking		You are not allowed to smoke. Usually public areas	
Toxic		It is poisonous.	



Emergency Services Word Mat



police officers

rescue



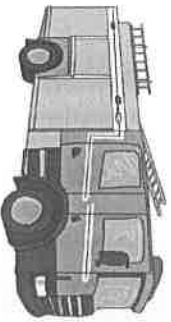
first aid

hurt



ambulance

accident

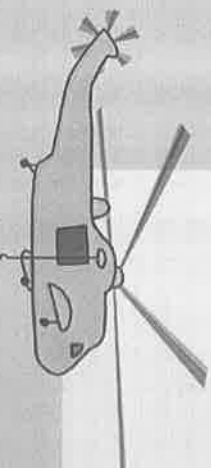


fire engine



siren

rescue helicopter



mountain

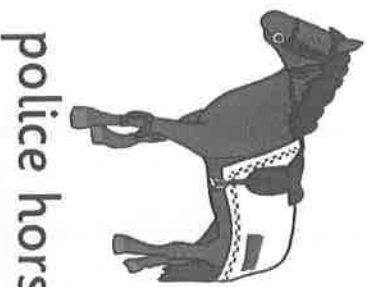
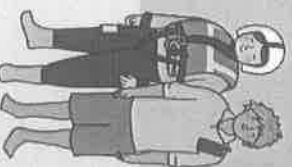
rescue

help

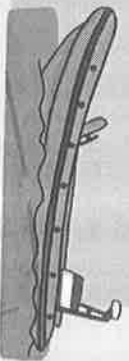


paramedics

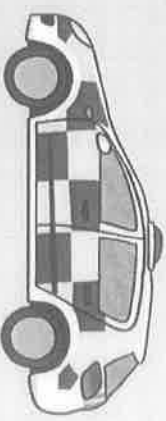
life guards



police horse



lifeboat



police car

fire officers



emergency

What Does a Paramedic Do?

Paramedics have lots of skills including:

- being reliable;
- being calm;
- being brave, not easily scared;
- being able to work in tricky conditions and places.



What roles and responsibilities do paramedics have?

Paramedics are responsible for helping people that are hurt or ill. If you need them, then you would ring 999, just like you would for the police or the fire service. They try to get to people that need help as quickly as they possibly can. They can use lots of different medicines and machines to help people who are in trouble and keep them alive until they can get to hospital. They might need to help someone who is having trouble breathing or who has been hit by a car. Being a paramedic is not a day job. There are paramedics available at every hour of the day in case people are in trouble. There are paramedics everywhere across the country.

Where do they work?

Paramedics spend most of their time on the road so that they can help people as quickly as possible. They can be found driving in ambulances, in special cars, on motorbikes and even in helicopters. They can be called to an accident anywhere at all. It might be on a beach, on the motorway or up a mountain. Paramedics have to be ready for anything. Some paramedics are especially brave as they choose to help people who are injured in war zones.



What do paramedics wear?

Paramedics wear bright clothes that reflect light so that they can be seen in the dark. This help to keep them and others safe. They wear a uniform, just like the police, so that people can recognise and trust them.

How do you become a paramedic?

You have to do well at school, spend time learning about medicine and practise first aid before you can become a paramedic.



What Does a Paramedic Do? Questions

Answer the questions below in full sentences.

1. Which number do you ring in an emergency?

2. When can you get help from a paramedic?

3. Name two types of vehicle that paramedics might use.

4. How do you know someone is a paramedic?

5. Name two skills that paramedics need.

6. What do you think would be tricky about being a paramedic?

Explain your answer.

What Does a Paramedic Do? **Answers**

1. Which number do you ring in an emergency?

In an emergency, you need to ring 999.

2. When can you get help from a paramedic?

You can get help from a paramedic any hour of the day whenever you need it.

3. Name two types of vehicle that paramedics might use.

Paramedics might use an ambulance, car, motorbike or helicopter.

4. How do you know someone is a paramedic?

Paramedics will be wearing a uniform.

5. Name two skills that paramedics need.

Paramedics need to be reliable, calm, brave and be able to work in tricky places.

6. What do you think would be tricky about being a paramedic? Explain your answer.

Accept pupil's own well-reasoned responses.