

ADVENT



United Nations Rights of the Child: Article 14 – Every child has the right to think and believe what they want and to practise their religion. We have the responsibility to respect the beliefs of others.



Advent Week 2 – The Candle of Peace

<https://www.youtube.com/watch?v=MS3vpAWW2Zc>

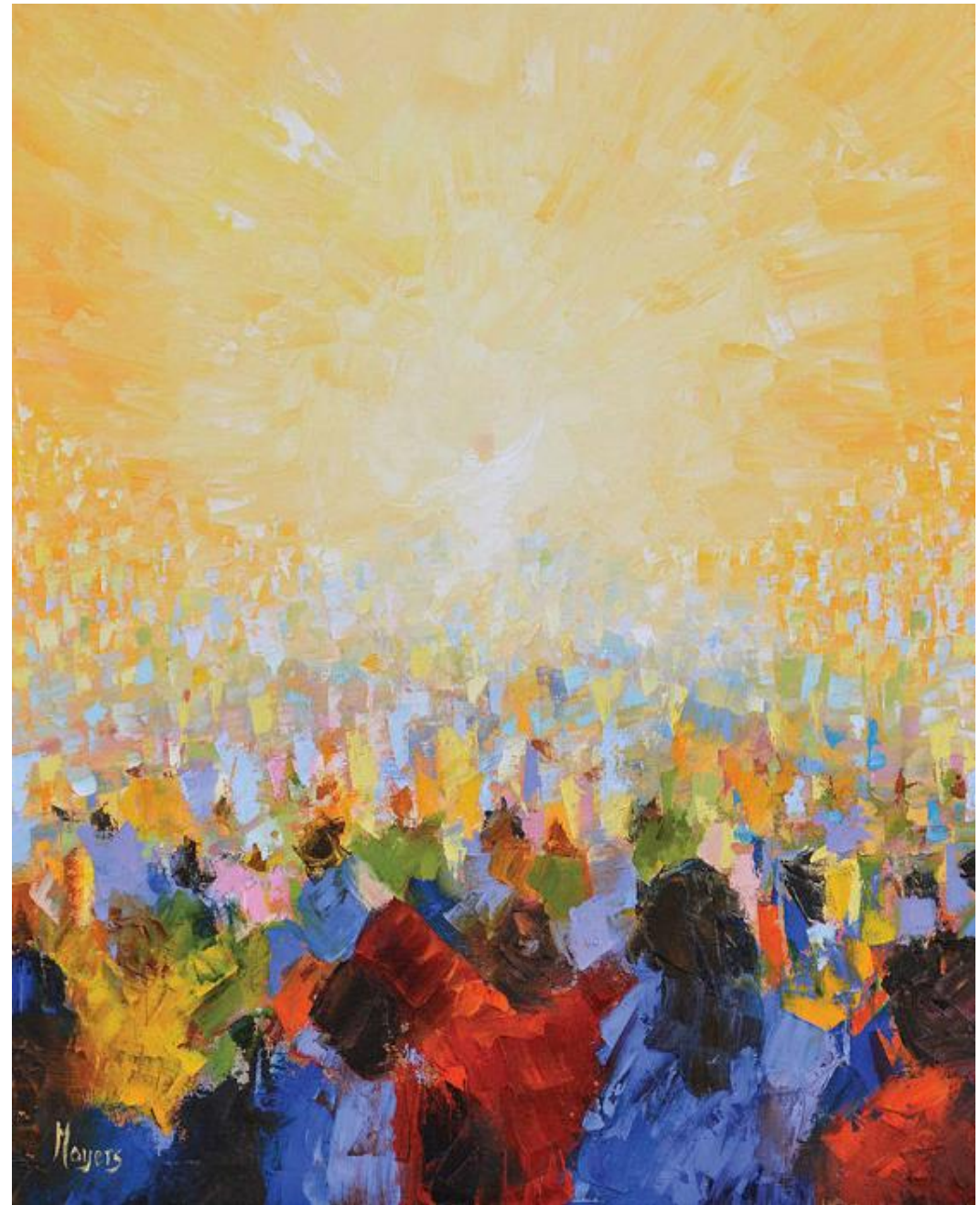
Zechariah's Prayer



Angel Gabriel visits Mary



'The Prince of Peace' by Mark Lawrence



'Hallelujah' by Mike Moyers

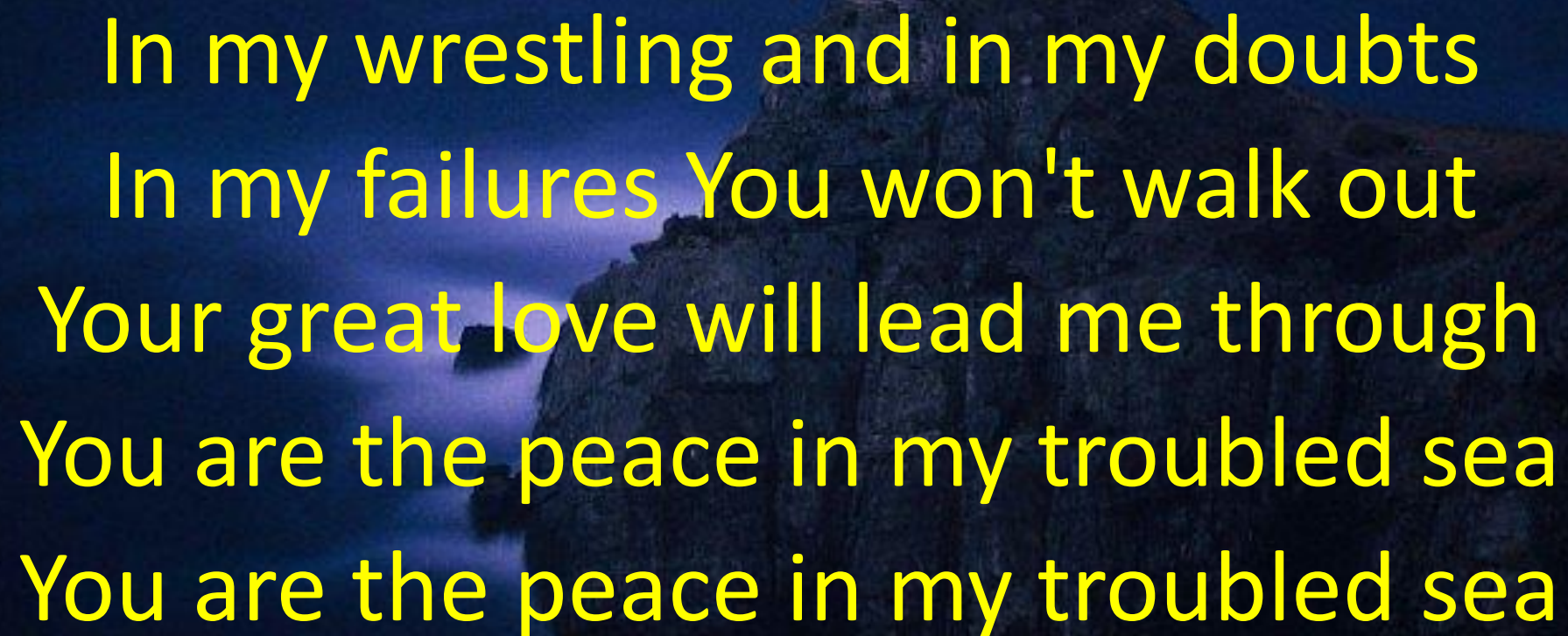
Let us pray



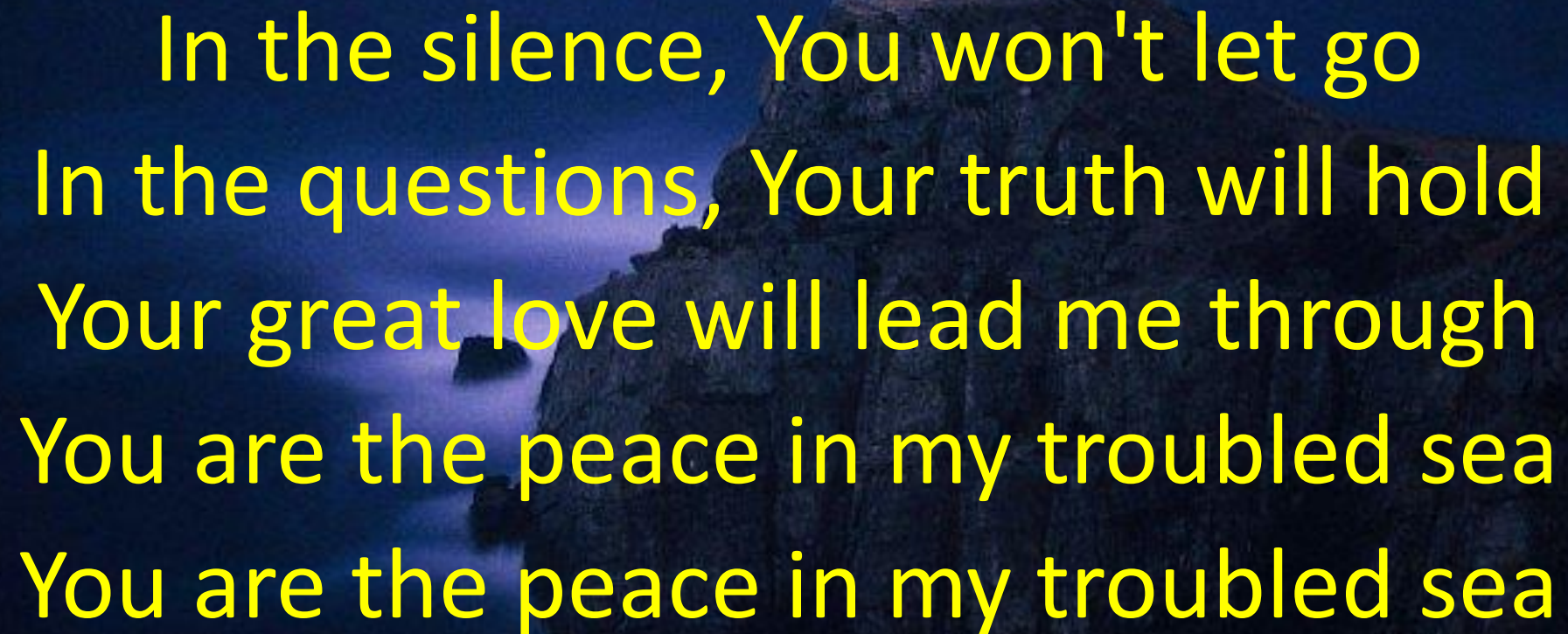
Dear God

Thank you that you are the God that gives peace. Help us to trust fully in you and rest in the peace that you offer. Help us to be at peace with each other during this time of Advent and always.


Amen

A photograph of a lighthouse perched on a dark, craggy rock island at night. The lighthouse is illuminated from within, casting a warm glow. The surrounding sea is dark and turbulent, with white foam visible at the base of the rocks. The sky is a deep, dark blue.

In my wrestling and in my doubts
In my failures You won't walk out
Your great love will lead me through
You are the peace in my troubled sea
You are the peace in my troubled sea

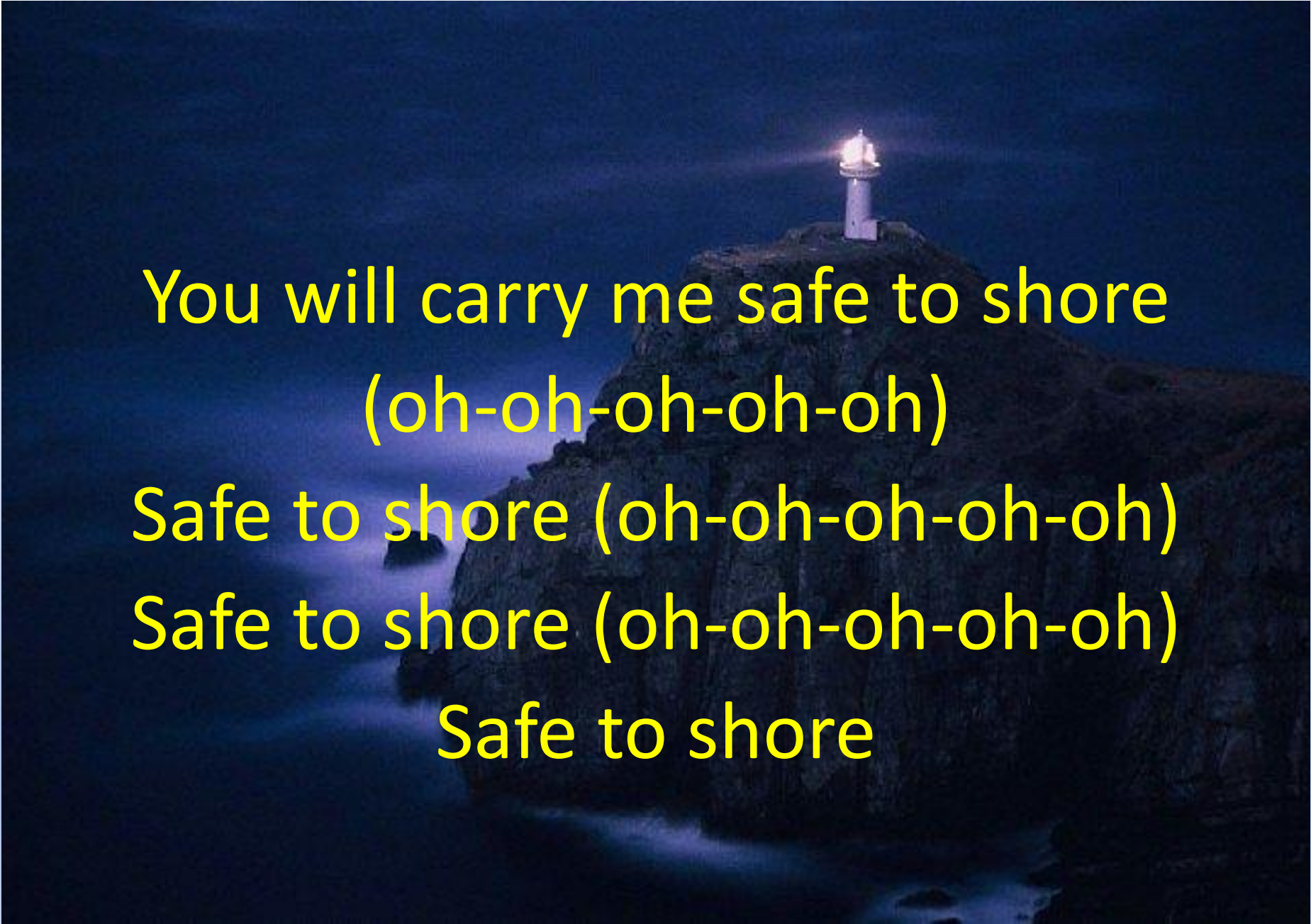
A lighthouse sits atop a dark, craggy rock island under a deep blue night sky. The lighthouse is illuminated from within, casting a warm glow. The sea is visible in the foreground, with white foam from waves crashing against the base of the rock. The overall mood is serene and hopeful.

In the silence, You won't let go
In the questions, Your truth will hold
Your great love will lead me through
You are the peace in my troubled sea
You are the peace in my troubled sea

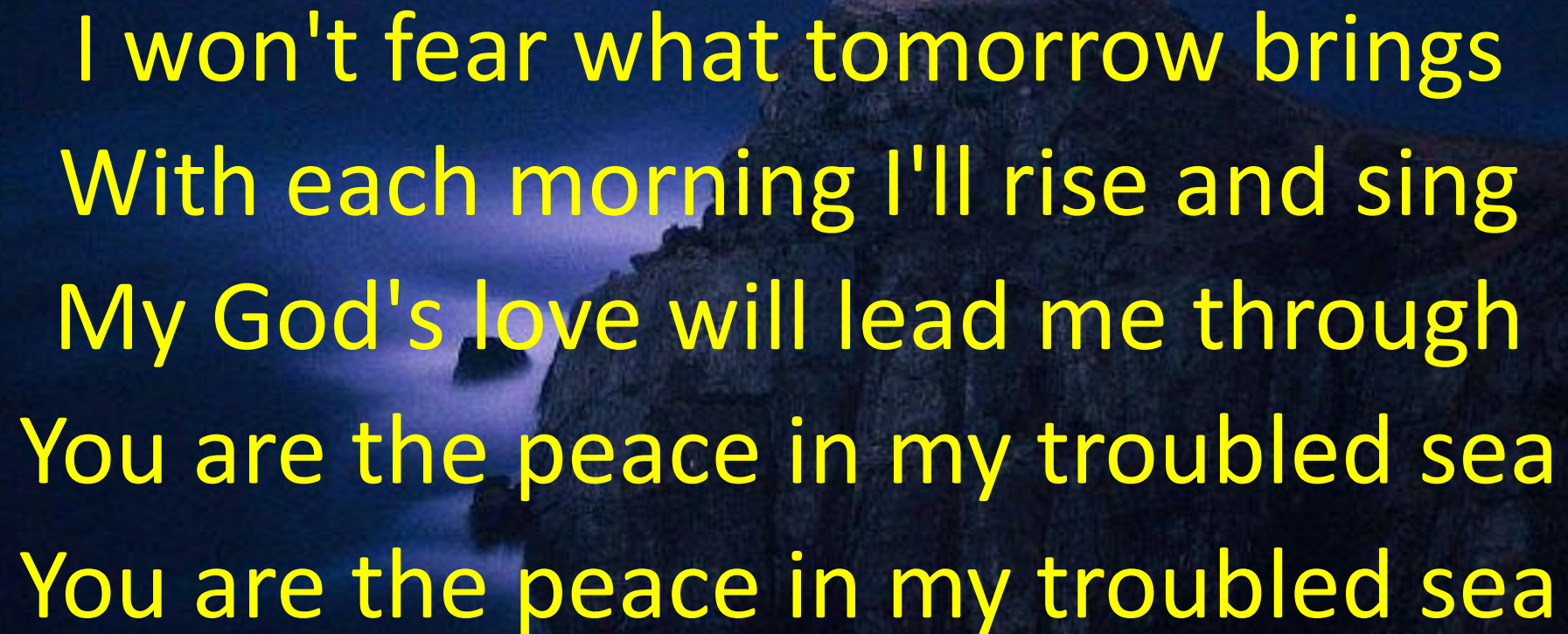
A lighthouse sits atop a dark, craggy rock formation. The lighthouse is white with a dark top section and is illuminated from within, casting a bright glow. The surrounding environment is dark, with some light reflecting off the water at the base of the cliff. The sky is a deep, dark blue.

My lighthouse, my lighthouse
Shining in the darkness.


I will follow You
My lighthouse, my lighthouse
I will trust the promise.

A lighthouse sits atop a dark, craggy cliff under a deep blue night sky. The lighthouse is illuminated from within, casting a warm glow. Below the cliff, the ocean is turbulent, with white foam from crashing waves visible. The overall scene is dramatic and evocative.

You will carry me safe to shore
(oh-oh-oh-oh-oh)
Safe to shore (oh-oh-oh-oh-oh)
Safe to shore (oh-oh-oh-oh-oh)
Safe to shore

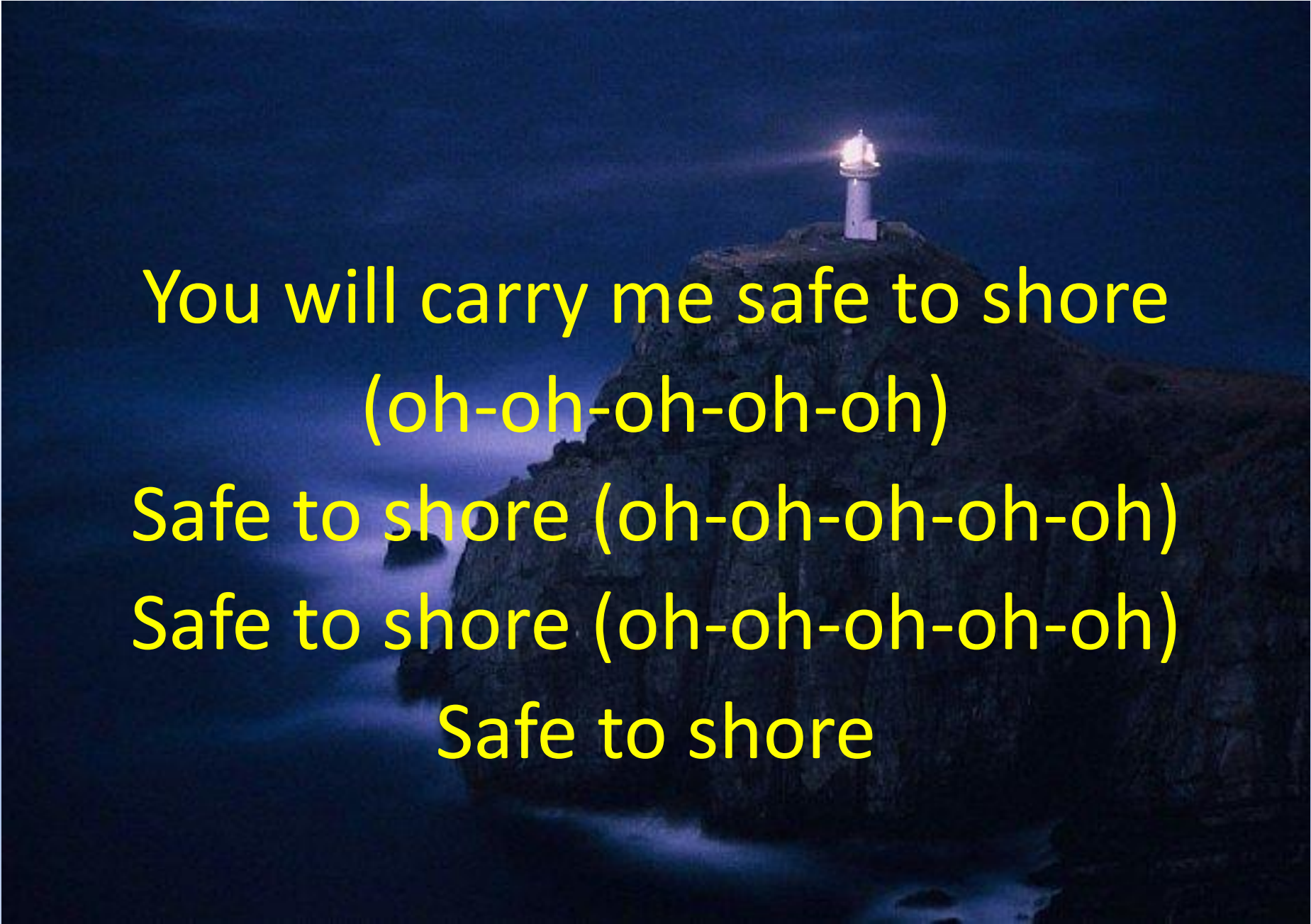
A lighthouse sits atop a dark, craggy rock island at night. The lighthouse is illuminated from within, casting a warm glow. The surrounding sea is dark with white foam from waves crashing against the base of the island. The sky is a deep, dark blue.

I won't fear what tomorrow brings
With each morning I'll rise and sing
My God's love will lead me through
You are the peace in my troubled sea
You are the peace in my troubled sea

A lighthouse sits atop a dark, craggy rock formation. The lighthouse is white with a dark top section and is illuminated from within, casting a warm glow. The surrounding environment is dark, with the sky and sea appearing in deep blues and blacks. The text is overlaid in a bright yellow color.

My lighthouse, my lighthouse
Shining in the darkness.

I will follow You
My lighthouse, my lighthouse
I will trust the promise.


A lighthouse sits atop a dark, craggy rock formation under a deep blue night sky. The lighthouse is illuminated from within, casting a warm glow. Below the cliff, the dark sea is visible with white foam from waves crashing against the rocks.

You will carry me safe to shore
(oh-oh-oh-oh-oh)
Safe to shore (oh-oh-oh-oh-oh)
Safe to shore (oh-oh-oh-oh-oh)
Safe to shore

A photograph of a lighthouse perched on a dark, craggy rock formation at night. The lighthouse is illuminated from within, casting a warm glow. The sky is a deep, dark blue, and the sea below is turbulent, with white foam from crashing waves visible at the base of the cliff.

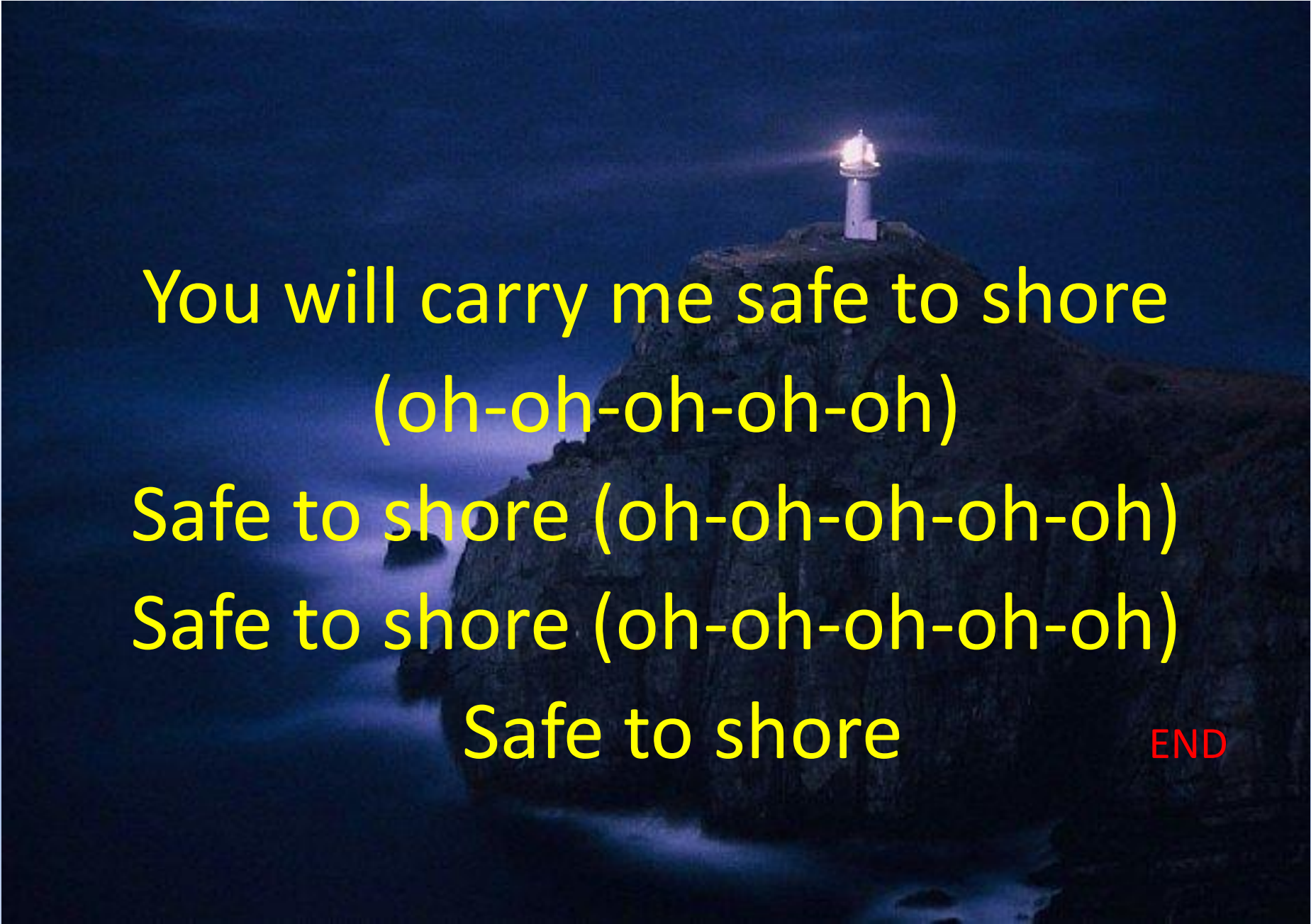
Fire before us. You're the brightest
You will lead us through the storms

(repeat 4 times)

A lighthouse sits atop a dark, craggy rock formation. The lighthouse is white with a dark top section and is illuminated from within, casting a bright glow. The surrounding environment is dark, with the sky and sea appearing as deep blues and blacks. The text is overlaid in a bright yellow color.

My lighthouse, my lighthouse
Shining in the darkness.

I will follow You
My lighthouse, my lighthouse
I will trust the promise.

A lighthouse sits atop a dark, craggy rock formation. The lighthouse is illuminated from within, casting a warm glow. The sky is a deep, dark blue. Below the cliff, the ocean is visible with white foam from waves crashing against the rocks.

You will carry me safe to shore
(oh-oh-oh-oh-oh)

Safe to shore (oh-oh-oh-oh-oh)

Safe to shore (oh-oh-oh-oh-oh)

Safe to shore

END