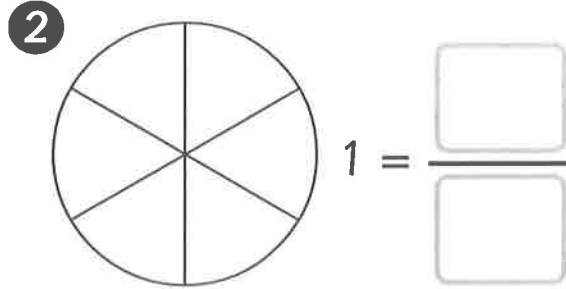
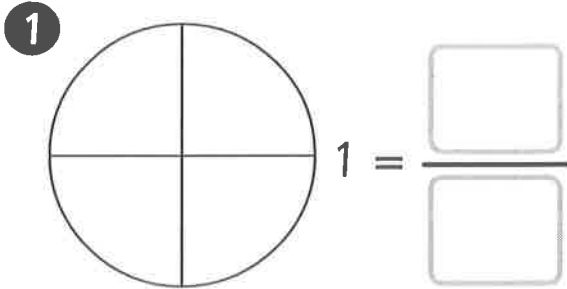




Name: _____ Class: _____

Write the fraction represented by each shape.



Complete each fraction to make it represent the whole number given.

3

 $1 = \frac{\square}{2}$

4

 $2 = \frac{\square}{2}$

5

 $3 = \frac{\square}{2}$

6

 $4 = \frac{\square}{2}$

7

 $1 = \frac{\square}{3}$

8

 $2 = \frac{\square}{3}$

9

 $3 = \frac{\square}{3}$

10

 $4 = \frac{\square}{3}$

11

 $1 = \frac{\square}{4}$

12

 $2 = \frac{\square}{4}$

13

 $3 = \frac{\square}{4}$

14

 $4 = \frac{\square}{4}$

15

 $1 = \frac{\square}{6}$

16

 $2 = \frac{\square}{6}$

17

 $3 = \frac{\square}{6}$

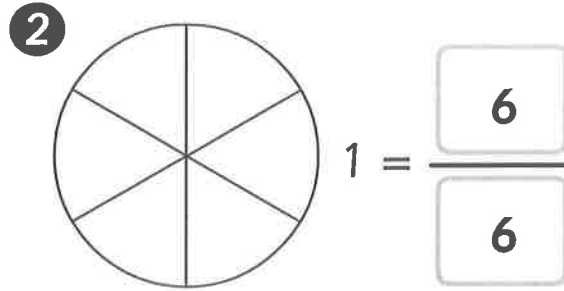
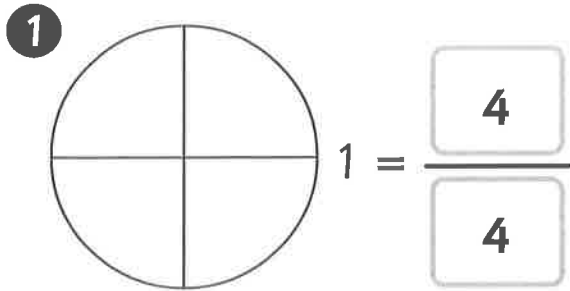
18

 $4 = \frac{\square}{6}$



Name: _____ Class: _____

Write the fraction represented by each shape.



Complete each fraction to make it represent the whole number given.

3 $1 = \frac{\boxed{2}}{\boxed{2}}$

4 $2 = \frac{\boxed{4}}{\boxed{2}}$

5 $3 = \frac{\boxed{6}}{\boxed{2}}$

6 $4 = \frac{\boxed{8}}{\boxed{2}}$

7 $1 = \frac{\boxed{3}}{\boxed{3}}$

8 $2 = \frac{\boxed{6}}{\boxed{3}}$

9 $3 = \frac{\boxed{9}}{\boxed{3}}$

10 $4 = \frac{\boxed{12}}{\boxed{3}}$

11 $1 = \frac{\boxed{4}}{\boxed{4}}$

12 $2 = \frac{\boxed{8}}{\boxed{4}}$

13 $3 = \frac{\boxed{12}}{\boxed{4}}$

14 $4 = \frac{\boxed{16}}{\boxed{4}}$

15 $1 = \frac{\boxed{6}}{\boxed{6}}$

16 $2 = \frac{\boxed{12}}{\boxed{6}}$

17 $3 = \frac{\boxed{18}}{\boxed{6}}$

18 $4 = \frac{\boxed{24}}{\boxed{6}}$



Name: _____ Class: _____

Read the sentences. Add 'a' or 'an' to complete the sentence.

- 1 There was _____ arrow on the ground.
- 2 They wanted to use _____ apple for the target.
- 3 There was _____ gatehouse next to the castle.
- 4 There was _____ axe mounted on the wall.
- 5 The armourer found _____ extra sword.
- 6 The kitchen needed _____ new oven.
- 7 They saw _____ crossbow in the armoury.
- 8 There was _____ watchman at the top of the tower.
- 9 The King spotted _____ eel in the lake.
- 10 They looked carefully for _____ point of entry.



Look through the book you are reading. Can you find any sentences with examples of 'a' or 'an' before a word beginning with a consonant or a vowel? Write them down.



Name: _____ Class: _____

Read the sentences. Add 'a' or 'an' to complete the sentence.

- 1 There was an arrow on the ground.
- 2 They wanted to use an apple for the target.
- 3 There was a gatehouse next to the castle.
- 4 There was an axe mounted on the wall.
- 5 The armourer found an extra sword.
- 6 The kitchen needed a new oven.
- 7 They saw a crossbow in the armoury.
- 8 There was a watchman at the top of the tower.
- 9 The King spotted an eel in the lake.
- 10 They looked carefully for a point of entry.



Look through the book you are reading. Can you find any sentences with examples of 'a' or 'an' before a word beginning with a consonant or a vowel? Write them down.

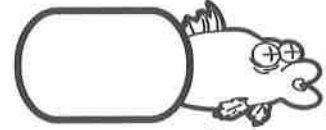
Accept all reasonable responses



Name: _____ Class: _____

Manu is really good at fishing and he shares his fish with other people.
Solve these problems to find out how many fish he gives away.

1 Manu caught 50 fish. He gave $\frac{1}{5}$ to Stig.
How many fish was that?



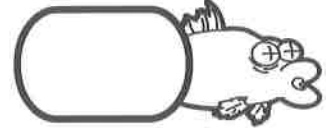
2 Manu caught 30 fish. He gave $\frac{1}{2}$ to Sten.
How many fish was that?



3 Manu caught 27 fish. He gave $\frac{1}{3}$ to Klara.
How many fish was that?



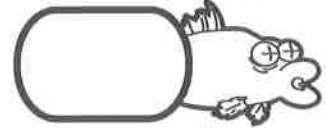
4 Manu caught 24 fish. He gave $\frac{3}{4}$ to Jack.
How many fish was that?



5 Manu caught 32 fish. He gave $\frac{1}{4}$ to Granny.
How many fish was that?



6 Manu caught 20 fish. He gave $\frac{3}{4}$ to Stig.
How many fish was that?



7 Manu caught 35 fish. He gave $\frac{1}{7}$ to Stig.
How many fish was that?



8 Manu caught 60 fish. He gave $\frac{5}{10}$ to Klara.
How many fish was that?



Manu has had a really good days fishing. He has caught 72 fish!

9 What would $\frac{1}{3}$ of Manu's fish be?



10 What would $\frac{1}{2}$ of Manu's fish be?



11 What would $\frac{1}{4}$ of Manu's fish be?



12 What would $\frac{1}{6}$ of Manu's fish be?



13 What would $\frac{1}{12}$ of Manu's fish be?






Name: _____

Class: _____

Manu is really good at fishing and he shares his fish with other people.
Solve these problems to find out how many fish he gives away.

1 Manu caught 50 fish. He gave $\frac{1}{5}$ to Stig.
How many fish was that?

10 

2 Manu caught 30 fish. He gave $\frac{1}{2}$ to Sten.
How many fish was that?

15 

3 Manu caught 27 fish. He gave $\frac{1}{3}$ to Klara.
How many fish was that?

9 

4 Manu caught 24 fish. He gave $\frac{3}{4}$ to Jack.
How many fish was that?

18 

5 Manu caught 32 fish. He gave $\frac{1}{4}$ to Granny.
How many fish was that?

8 


6 Manu caught 20 fish. He gave $\frac{3}{4}$ to Stig.
How many fish was that?

15 

7 Manu caught 35 fish. He gave $\frac{1}{7}$ to Stig.
How many fish was that?

5 

8 Manu caught 60 fish. He gave $\frac{5}{10}$ to Klara.
How many fish was that?

30 

Manu has had a really good days fishing. He has caught 72 fish!

9 What would $\frac{1}{3}$ of Manu's fish be?

24

10 What would $\frac{1}{2}$ of Manu's fish be?

36

11 What would $\frac{1}{4}$ of Manu's fish be?

18

12 What would $\frac{1}{6}$ of Manu's fish be?

12

13 What would $\frac{1}{12}$ of Manu's fish be?

6





Name: _____

Class: _____

Make your way across the jungle maze by colouring the adverbs.



runner

jungle

held

gently

bridge

challenge

moved

best

speedily

take

way

neatly

angrily

rudely

shone

loudly

helpfully

led

everyone

people

brilliantly

snake

interrupted

was

advised





Name: _____ Class: _____

Rewrite each of the sentences, including adverbs to add description.

1 The alligator swam downstream.

2 The river twisted and turned through the jungle.

3 The waterfall flowed into the lake.

4 The fish swam down the river.

5 The pool filled with water.

6 The boy ate the fish.

7 The old man made a net.

8 The bird hunted at night.

9 The fruit grew in the summer.

10 The man lost his hat in the river.





Survive a Shower

Activity Sheet



Name: _____

Class: _____

Make your way across the jungle maze by colouring the adverbs.



runner

jungle

held

gently

bridge

challenge

moved

best

speedily

take

way

neatly

angrily

rudely

shone

loudly

helpfully

led

everyone

people

brilliantly

snake

interrupted

was

advised





Name: _____ Class: _____

Rewrite each of the sentences, including adverbs to add description.

1 The alligator swam downstream.

The alligator swam swiftly downstream.

2 The river twisted and turned through the jungle.

The river twisted and turned gently through the jungle.

3 The waterfall flowed into the lake.

The waterfall flowed loudly into the lake.

4 The fish swam down the river.

The fish swam unhurriedly down the river.

5 The pool filled with water.

The pool filled rapidly with water.

6 The boy ate the fish.

The boy hungrily ate the fish.

7 The old man made a net.

The old man speedily made a net.

8 The bird hunted at night.

The bird hunted ruthlessly at night.

9 The fruit grew in the summer.

The fruit grew quickly in the summer.

10 The man lost his hat in the river.

The man suddenly lost his hat in the river.



Can I locate mountains around the United Kingdom?



Basingstoke, Hampshire, England	Carrauntoohil, County Kerry, Ireland
Scafell Pike, Cumbria, England	Ben Nevis, Scotland
Snowdon, Llanberis, Wales	Ben More, Scotland
Merrick, Scotland	Sieve Donard, Northern Ireland

The United Kingdom



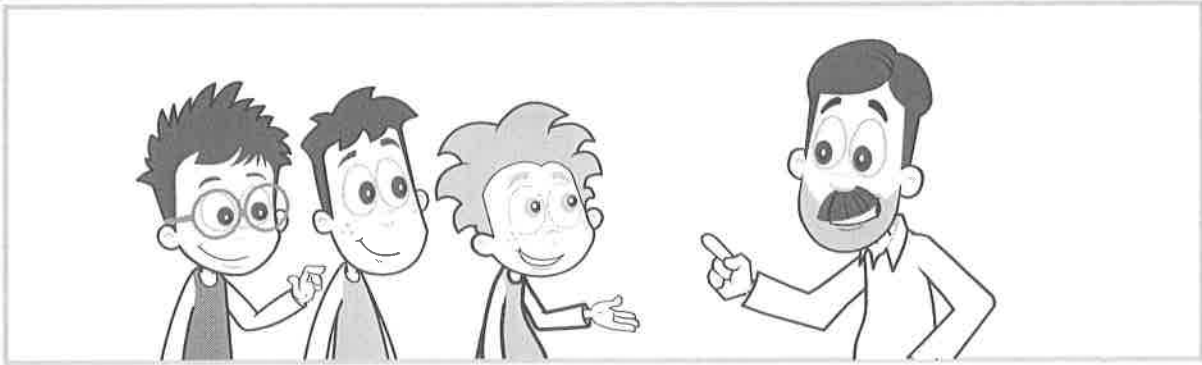


Name: _____

Class: _____

Add the possessive apostrophes to these sentences.

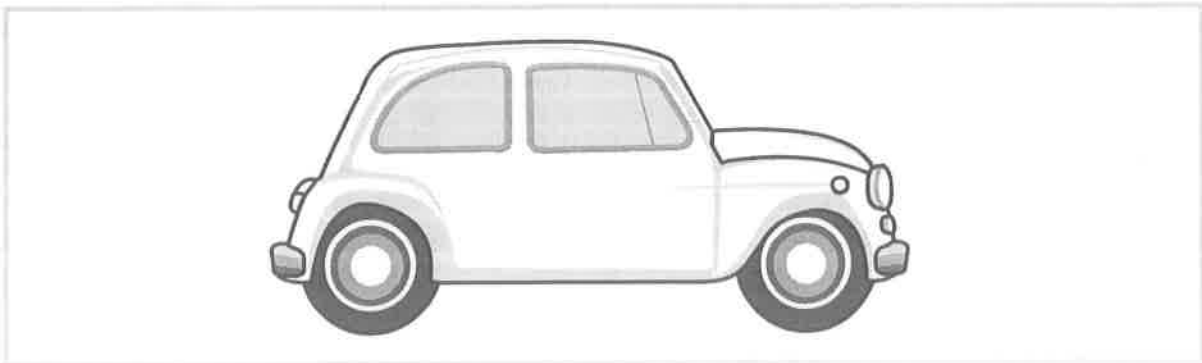
- 1 The giraffes neck reached the highest leaves.
- 2 They picked up Stens rucksack.
- 3 The lion stood by the waters edge.
- 4 The boys teacher spoke for a long time.



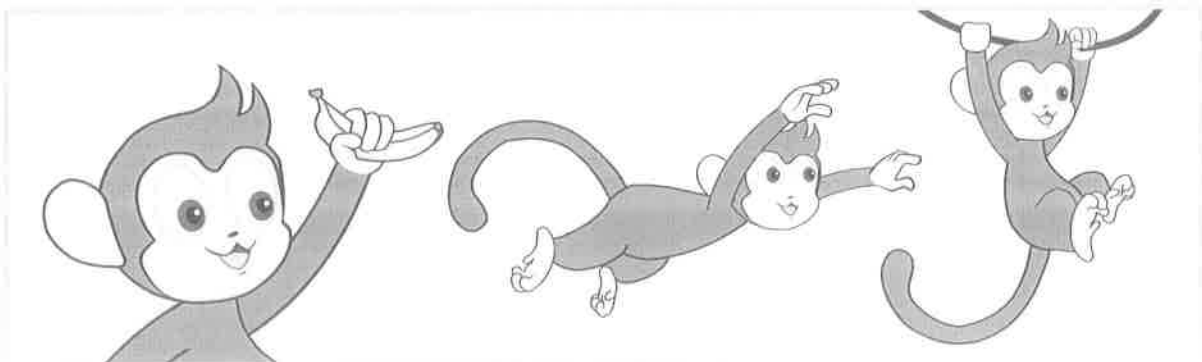
- 5 The jungle guides jeeps travelled one by one down the track.

Complete the sentence by writing the correct words and punctuation.

- 6 He turned the key to start the _____ engine.



- 7 The _____ food was soon eaten up.



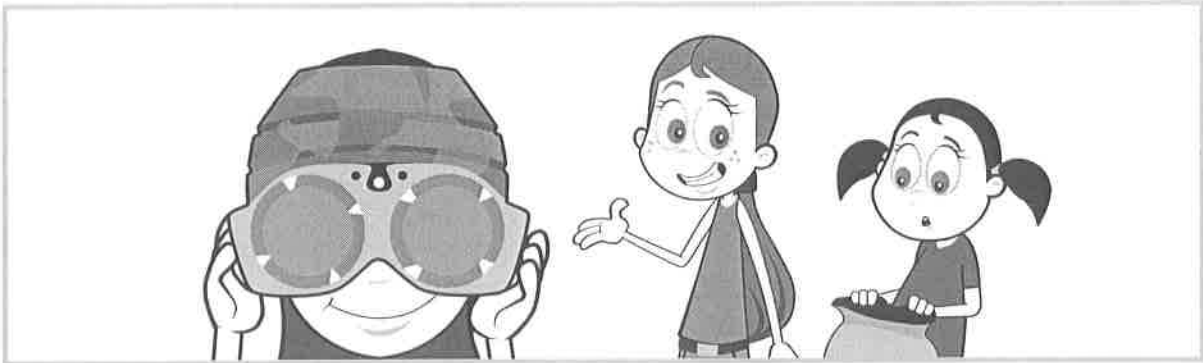


Name: _____

Class: _____

Complete the sentence by writing the correct words and punctuation.

8 The _____ trek was about to start.



9 _____ water bottle needed filling.



10 The _____ leaves were starting to fall.



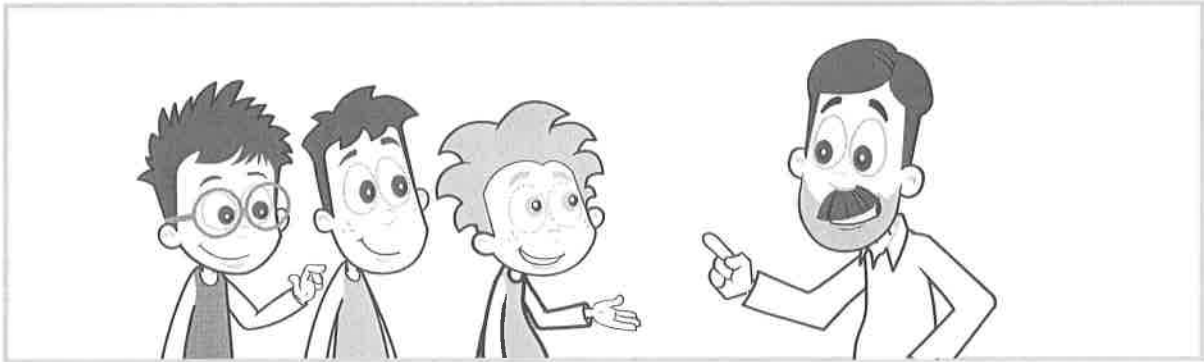


Name: _____

Class: _____

Add the possessive apostrophes to these sentences.

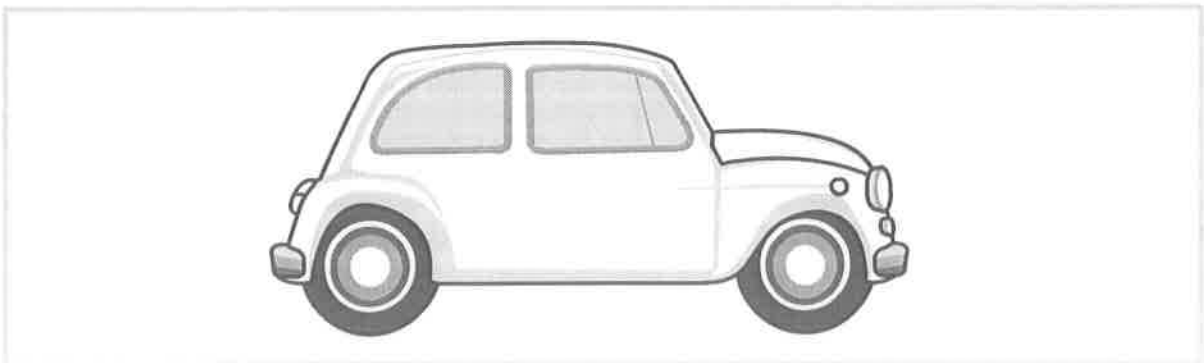
- 1 The giraffe's neck reached the highest leaves.
- 2 They picked up Sten's rucksack.
- 3 The lion stood by the water's edge.
- 4 The boy's teacher spoke for a long time.



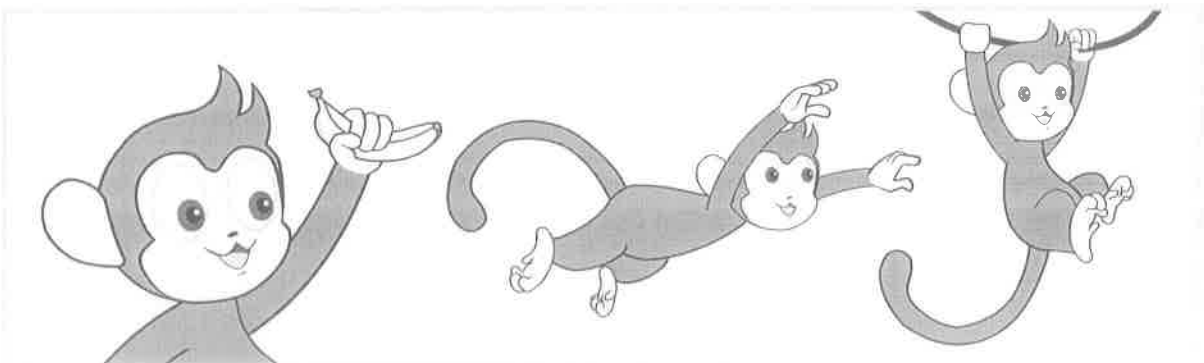
- 5 The jungle guides' jeeps travelled one by one down the track.

Complete the sentence by writing the correct words and punctuation.

- 6 He turned the key to start the car's engine.



- 7 The **monkeys'** food was soon eaten up.



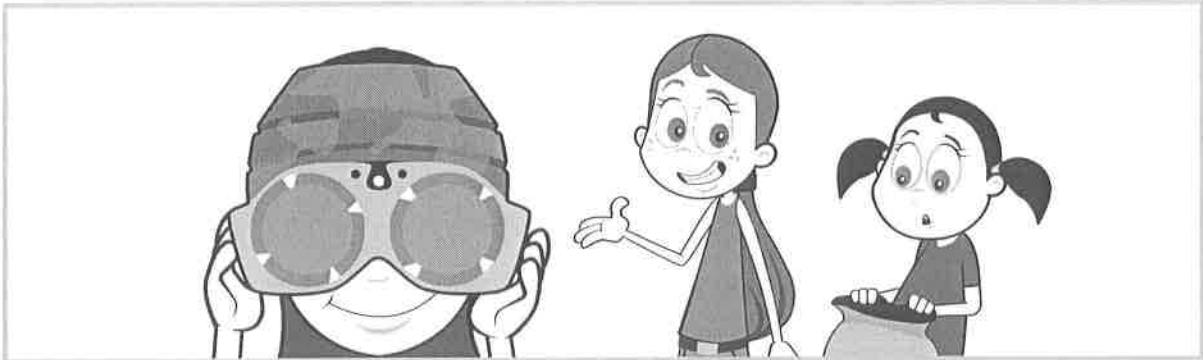


Name: _____

Class: _____

Complete the sentence by writing the correct words and punctuation.

8 The girls' trek was about to start.



9 Manu's water bottle needed filling.



10 The tree's leaves were starting to fall.





Pizza Box Fractions

Activity Sheet

Name: _____

Class: _____

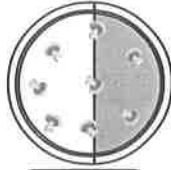
Look at the pizzas. Circle the character who has eaten the most pizza.

1



Sten

$$\frac{1}{7}$$



Manu

$$\frac{1}{2}$$



Klara

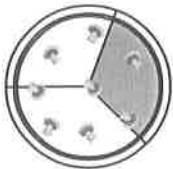
$$\frac{1}{4}$$



Stig

$$\frac{1}{9}$$

2



Sten

$$\frac{1}{3}$$



Manu

$$\frac{1}{10}$$



Klara

$$\frac{1}{4}$$



Stig

$$\frac{1}{9}$$

How much pizza have Sten and Manu eaten altogether.
Write the correct fraction in the box provided.

3



Sten

$$\frac{1}{7}$$

+



Manu

$$\frac{3}{7}$$

=

4



Sten

$$\frac{5}{8}$$

+



Manu

$$\frac{3}{8}$$

=



How many of each item has Sten eaten.
Write your answer in the box provided

5

Sten has 24 chips. He has eaten $\frac{1}{2}$ of his chips.
How many chips has Sten eaten?



Pizza Box Fractions

Activity Sheet



Name: _____ Class: _____

- 6 Sten has 12 dough balls. He has eaten $\frac{1}{3}$ of his dough balls.
How many dough balls has Sten eaten?

- 7 Sten has 32 strawberries.
He has eaten $\frac{1}{8}$ of his strawberries.
How many strawberries has Sten eaten?

- 8 Sten has 16 breadsticks.
He has eaten $\frac{1}{4}$ of his breadsticks.
How many breadsticks has Sten eaten?



Name: _____

Class: _____

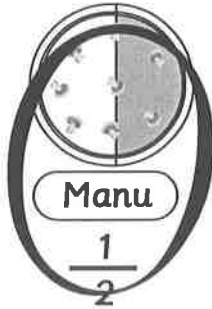
Look at the pizzas. Circle the character who has eaten the most pizza.

1



Sten

$$\frac{1}{7}$$



Manu

$$\frac{1}{2}$$



Klara

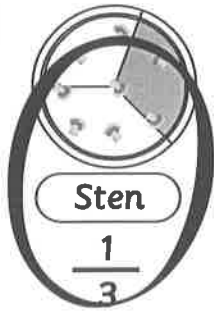
$$\frac{1}{4}$$



Stig

$$\frac{1}{9}$$

2



Sten

$$\frac{1}{3}$$



Manu

$$\frac{1}{10}$$



Klara

$$\frac{1}{4}$$



Stig

$$\frac{1}{9}$$

How much pizza have Sten and Manu eaten altogether.
Write the correct fraction in the box provided.

3



Sten

$$\frac{1}{7}$$

+



Manu

$$\frac{3}{7}$$

=

$$\frac{4}{7}$$

4



Sten

$$\frac{5}{8}$$

+



Manu

$$\frac{3}{8}$$

=

$$\frac{8}{8}$$



How many of each item has Sten eaten.
Write your answer in the box provided

5

Sten has 24 chips. He has eaten $\frac{1}{2}$ of his chips.
How many chips has Sten eaten?

12



Name: _____ Class: _____

6 Sten has 12 dough balls. He has eaten $\frac{1}{3}$ of his dough balls.
How many dough balls has Sten eaten?

4

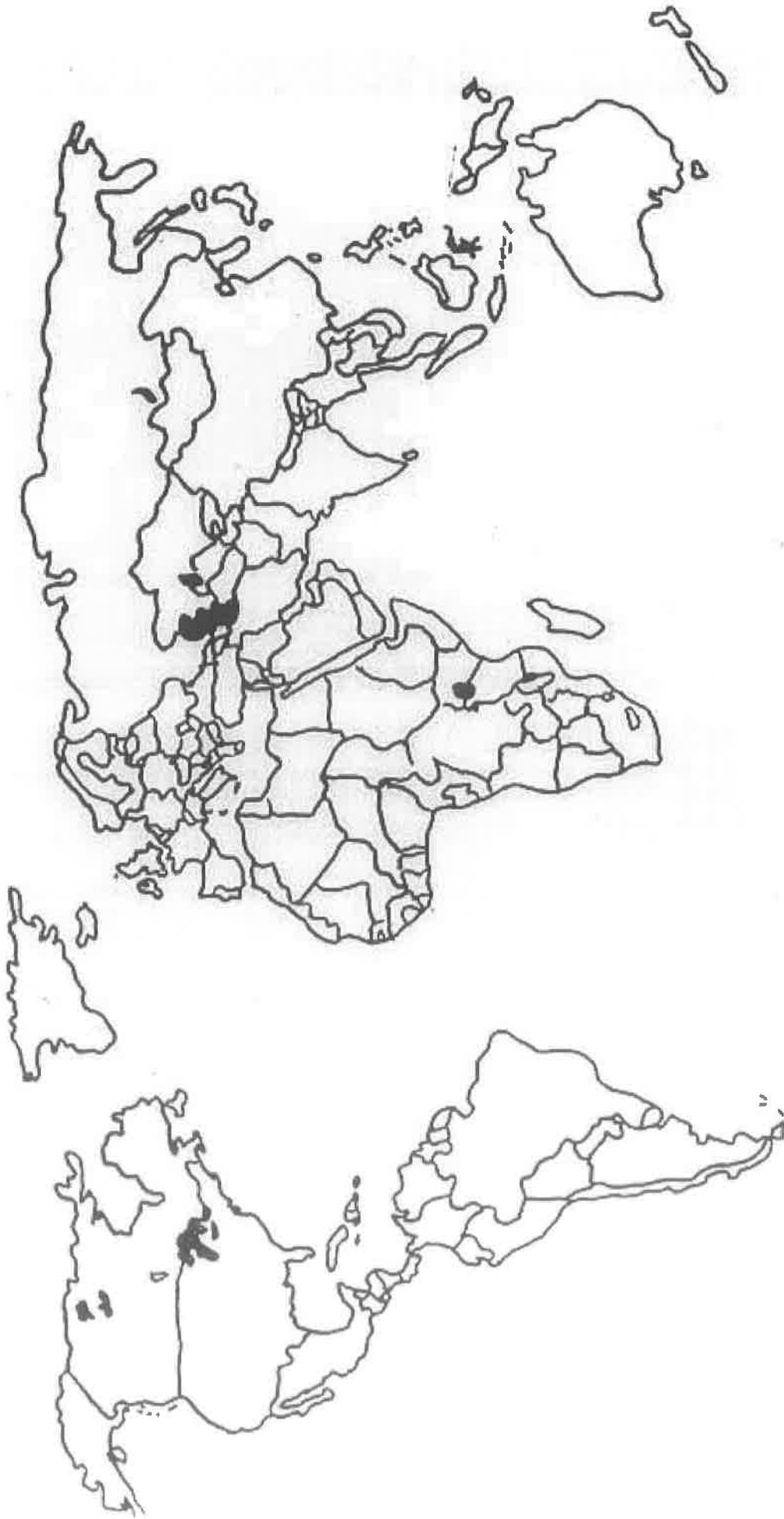
7 Sten has 32 strawberries.
He has eaten $\frac{1}{8}$ of his strawberries.
How many strawberries has Sten eaten?

4

8 Sten has 16 breadsticks.
He has eaten $\frac{1}{4}$ of his breadsticks.
How many breadsticks has Sten eaten?

4

Can I locate famous mountains on a world map?



Mount Mckinley – USA

Kilimanjaro – Tanzania

Mount Fuji – Japan

Mount Everest – Nepal

Rivers

How Are Rivers Made?

Rivers are large, natural streams which flow to the sea or to a lake. Rivers begin life at the **source**, which could be a natural spring, melted ice and snow, or rainwater running down the land. Most rivers start as a tiny stream, high up a mountain. Smaller streams merge into one larger **channel** and **erode** the land until a river is formed. Most rivers end up in the sea at the **mouth** of the river.

The World's Greatest Rivers

Some rivers around the world are famous for being long, wide or fast-flowing. The Nile river in Africa is the longest river in the world. It is 6,650km long. The Nile river **basin** covers eleven countries and flows into the Mediterranean Sea.

The Amazon river in South America is the world's widest river. At its widest point, the river is about 11km wide. This river feeds the famous Amazon rainforest and is also the fastest-flowing river in the world.



The Nile river has so many people living alongside it that the lights of the houses and streets can be seen from space.

River Life

Rivers are essential for life as we know it. They carry water and important nutrients all around the earth and provide habitats for millions of species of plants and animals.

Humans use rivers for many different things, such as:

- Drinking water
- Transport
- Washing
- Trading
- Cleaning clothes
- Leisure
- Fishing



Millions of people around the world rely on rivers to make their living.

"Fishing boats on Lymington River" by Ian Capper is licensed under CC BY-SA 2.0

Water Pollution

Just like oceans and the air, rivers can become **polluted** in various ways. River pollution is damaging to humans and to the environment because it **contaminates** the fresh water.

Types of river pollution include:

- Rubbish and solids (plastic, metal and other objects)
- Sediment (sand, grit etc.)
- Chemicals (factory waste, fertilisers, oils)
- Bacteria from animal and human waste

The best way to prevent river pollution is to stop the **pollutants** before they reach the river. Some helpful ways to protect your local river are:

- Keep oil and grease out of the sink. Instead, collect it in a jar and then throw it away with solid waste.
- Don't flush anything down the toilet except for toilet paper. Anything else might end up in oceans, lakes or rivers.
- Always save water. Turn off taps when you are not using them as this means that less water has to be cleaned again for use.



Glossary

basin	a rounded bowl in a landscape where water, such as a river, may collect
channel	a path through the landscape formed by the movement of water
contaminate	to make something impure or dirty by adding a new poisonous or damaging substance
erode	to gradually wear away the land
mouth	where a river empties into the sea or a lake
pollutants	substances which make water impure or unclean
polluted	made impure or unclean by adding poisonous or damaging substances
source	the beginning of a river, usually on high ground



Making Baskets Part 1

Activity Sheet

Name: _____

Class: _____

Find these words.

e	x	p	e	r	i	m	e	n	t	a	g	c	l	w	r
m	a	r	w	k	b	g	i	w	t	d	n	x	c	a	d
n	p	o	s	s	i	b	l	e	k	a	h	o	e	r	a
i	e	b	f	r	t	v	c	f	r	t	l	p	w	i	b
k	x	a	o	a	e	r	d	o	e	d	p	m	n	a	u
d	t	b	p	m	a	i	e	n	x	a	j	l	z	o	s
f	i	l	e	i	o	s	g	c	o	s	f	c	d	k	i
n	w	y	n	d	t	r	t	n	t	x	a	m	k	l	n
t	o	h	g	a	i	m	p	o	r	t	a	n	t	x	e
d	r	i	k	x	c	e	y	f	e	m	r	a	h	w	s
e	q	a	o	i	h	n	d	l	u	c	n	f	o	r	s
c	k	d	r	t	s	t	r	a	n	g	e	s	u	y	n
i	d	c	a	f	r	i	k	n	o	r	t	n	g	l	a
d	l	e	o	c	w	o	r	l	e	n	g	t	h	m	f
e	a	o	r	d	i	n	a	r	y	a	s	n	r	d	i

appear
business
circle
decide
experiment
important

length
possible
probably
reign
strange
though

mention
ordinary





Making Baskets Part 1

Activity Sheet

Name: _____ Class: _____

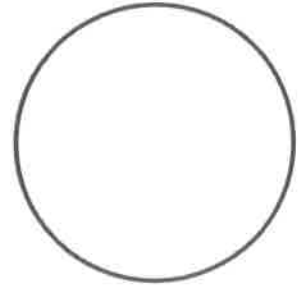
Write the word for each of the pictures below.



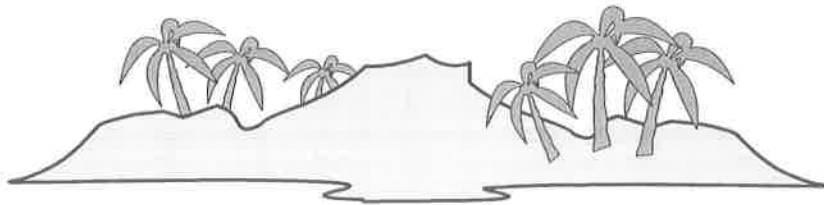
E _____



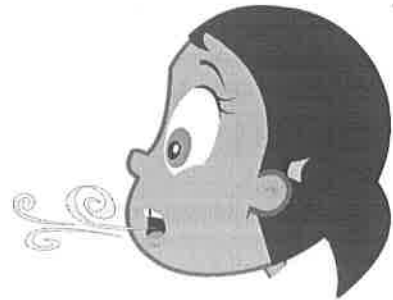
h _____



c _____



i _____



b _____



Making Baskets Part 1

Activity Sheet: Answer Sheet

Name: _____

Class: _____

Find these words.

e	x	p	e	r	i	m	e	n	t	a	g	c	l	w	r
m	a	r	w	k	b	g	i	w	t	d	n	x	c	a	d
n	p	o	s	s	i	b	l	e	k	a	h	o	e	r	a
i	e	b	f	r	t	v	c	f	r	t	l	p	w	i	b
k	x	a	o	a	e	r	d	o	e	d	p	m	n	a	u
d	t	b	p	m	a	i	e	n	x	a	j	l	z	o	s
f	i	l	e	i	o	s	g	c	o	s	f	c	d	k	i
n	w	y	n	d	t	r	t	n	t	x	a	m	k	l	n
t	o	h	g	a	i	m	p	o	r	t	a	n	t	x	e
d	r	i	k	x	c	e	y	f	e	m	r	a	h	w	s
e	q	a	o	i	h	n	d	l	u	c	n	f	o	r	s
c	k	d	r	t	s	t	r	a	n	g	e	s	u	y	n
i	d	c	a	f	r	i	k	n	o	r	t	n	g	l	a
d	l	e	o	c	w	o	r	l	e	n	g	t	h	m	f
e	a	o	r	d	i	n	a	r	y	a	s	n	r	d	i

appear
 business
 circle
 decide
 experiment
 important

length
 possible
 probably
 reign
 strange
 though

mention
 ordinary





Making Baskets Part 1

Activity Sheet: Answer Sheet

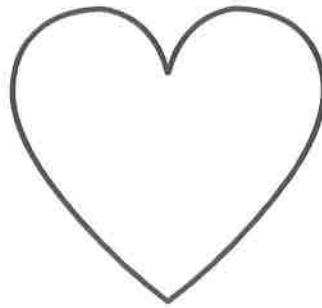
Name: _____

Class: _____

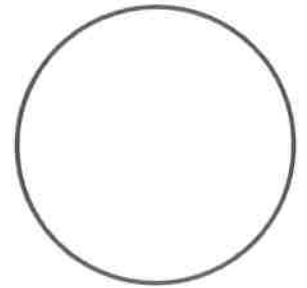
Write the word for each of the pictures below.



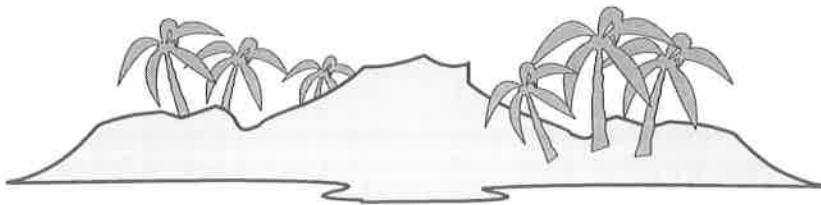
Earth _____



hearth _____



circle _____



island _____



breath _____



Name: _____

Class: _____

Circle the correct answer.

1 Which fraction is equivalent to $\frac{1}{2}$?

$\frac{2}{3}$

$\frac{3}{4}$

$\frac{1}{8}$

$\frac{2}{4}$

2 Which fraction is equivalent to $\frac{2}{3}$?

$\frac{5}{8}$

$\frac{4}{6}$

$\frac{1}{2}$

$\frac{4}{12}$

3 Which fraction is equivalent to $\frac{2}{10}$?

$\frac{1}{5}$

$\frac{2}{7}$

$\frac{5}{8}$

$\frac{3}{4}$

4 Which fraction is equivalent to $\frac{6}{8}$?

$\frac{5}{6}$

$\frac{2}{10}$

$\frac{3}{4}$

$\frac{1}{3}$

5 Which fraction is equivalent to $\frac{3}{5}$?

$\frac{5}{7}$

$\frac{6}{10}$

$\frac{1}{2}$

$\frac{3}{4}$

6 Which fraction is equivalent to $\frac{1}{4}$?

$\frac{2}{3}$

$\frac{5}{10}$

$\frac{2}{8}$

$\frac{1}{5}$



Circle all the fractions that are equivalent to $\frac{1}{2}$.

$\frac{2}{4}$

$\frac{4}{8}$

$\frac{1}{3}$

$\frac{2}{7}$

$\frac{3}{6}$

$\frac{1}{9}$

$\frac{5}{10}$

$\frac{3}{5}$

$\frac{2}{9}$

$\frac{6}{12}$



Name: _____

Class: _____

Circle the correct answer.

1 Which fraction is equivalent to $\frac{1}{2}$?

$\frac{2}{3}$ $\frac{3}{4}$ $\frac{1}{8}$ $\frac{2}{4}$

2 Which fraction is equivalent to $\frac{2}{3}$?

$\frac{5}{8}$ $\frac{4}{6}$ $\frac{1}{2}$ $\frac{4}{12}$

3 Which fraction is equivalent to $\frac{2}{10}$?

$\frac{1}{5}$ $\frac{2}{7}$ $\frac{5}{8}$ $\frac{3}{4}$

4 Which fraction is equivalent to $\frac{6}{8}$?

$\frac{5}{6}$ $\frac{2}{10}$ $\frac{3}{4}$ $\frac{1}{3}$

5 Which fraction is equivalent to $\frac{3}{5}$?

$\frac{5}{7}$ $\frac{6}{10}$ $\frac{1}{2}$ $\frac{3}{4}$

6 Which fraction is equivalent to $\frac{1}{4}$?

$\frac{2}{3}$ $\frac{5}{10}$ $\frac{2}{8}$ $\frac{1}{5}$



Circle all the fractions that are equivalent to $\frac{1}{2}$.

$\frac{2}{4}$ $\frac{4}{8}$ $\frac{1}{3}$ $\frac{2}{7}$ $\frac{3}{6}$ $\frac{1}{9}$ $\frac{5}{10}$ $\frac{3}{5}$ $\frac{2}{9}$ $\frac{6}{12}$

Journey of a river

Match up the key river terms on the left with the correct definitions:

source

The place where two rivers
join together.

mouth

An imaginary line separating one
river's drainage basin from another.

confluence

The place where a river begins.

tributary

A smaller river that joins a
bigger river.

drainage basin

Where a river enters into the sea.

watershed

This is what the river flows in.

river channel

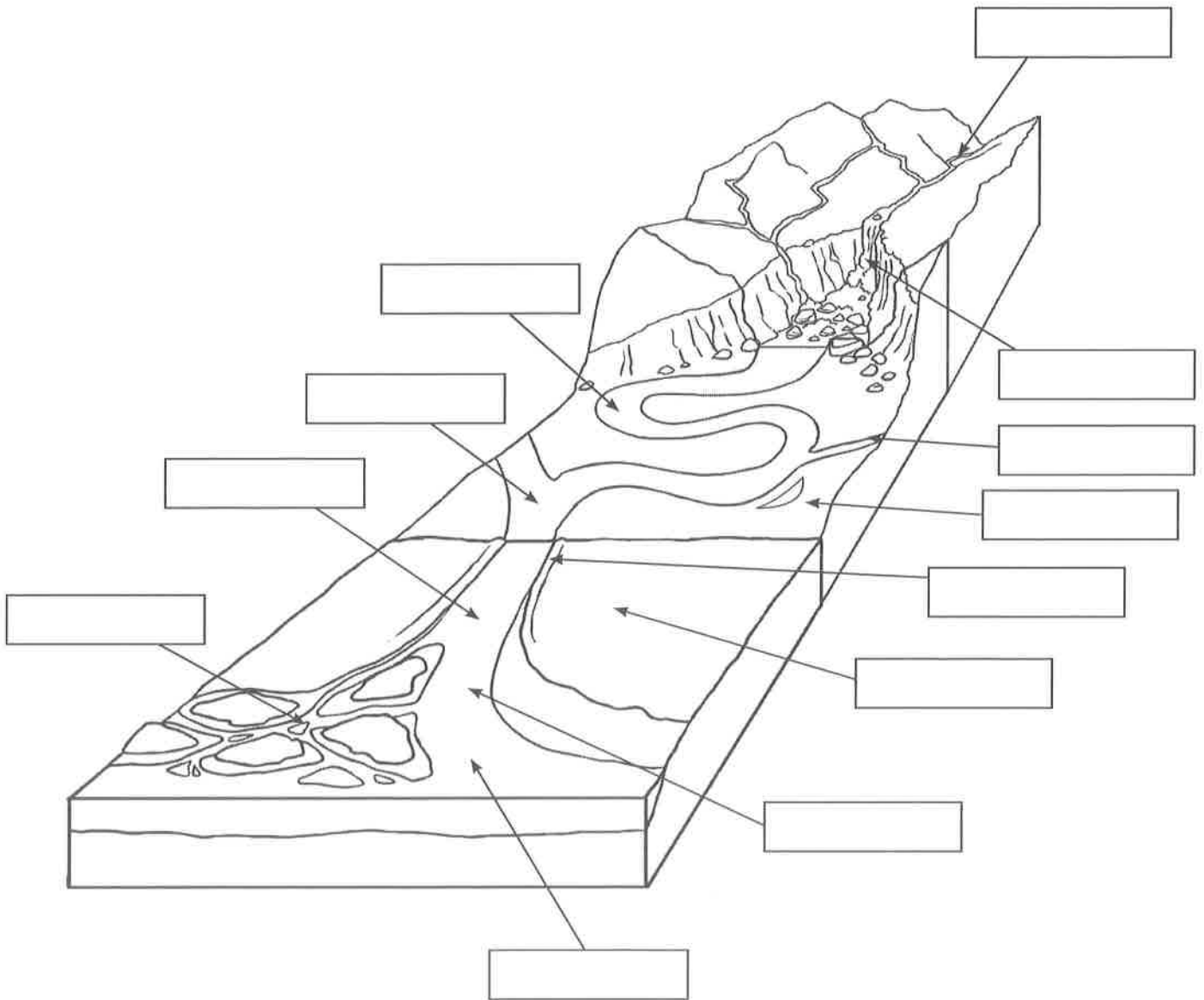
The area drained by a river.

If you are stuck, look at the glossary below.

bank	The riverbank is the land at the side of the river.
basin	The land water must cross to reach a river. It collects all available water from tributaries, creeks and streams in its area.
bed	The bed is the bottom of a river. A riverbed can be made of sand, rocks or mud depending on the river.
canal	A man-made waterway that is used so that boats can transport goods across the country.
current	The strength and speed of the river. Water always flows downhill; the steeper the ground is, the stronger the current will be.
confluence	The junction of two rivers, especially rivers of approximately equal width.
delta	A wide muddy or sandy area where some rivers meet the sea. The river slows down and drops all the sediment it was carrying.
downstream	The direction that the water flows, downhill towards the sea.
erosion	A fast flowing river can damage the riverbanks and wash bits of them downstream, making the river wider.
estuary	Where a river reaches the ocean and the river and ocean mix. Estuaries are normally wide and flat.
floodplain	The flat area around a river that often gets flooded when the level of water in the river is high.
fresh water	Rainwater that falls from the sky has no salt in it. We call this fresh water.
meander	A river that follows a winding course.
mouth	The end of a river where it flows into the sea, another river or a lake.
salt water	The type of water in seas and oceans.
silt	Small bits of dirt or sand that are carried along by a river.
source	The start of a river is its source. This could be a spring on a hillside, a lake, a bog or marsh. A river may have more than one source.
stream	A small river.
tidal river	At the end of a river, near the ocean, water from the sea flows up the river when the tide comes in. This part of the river is called 'tidal'.
tributary	A smaller river or stream that joins a big river.
upstream	The opposite direction to the way the water in a river flows.
watershed	Water flows down the side of hills into rivers, but water that lands on opposite sides of the same hill might flow into different rivers. The watershed is the boundary between two river basins.

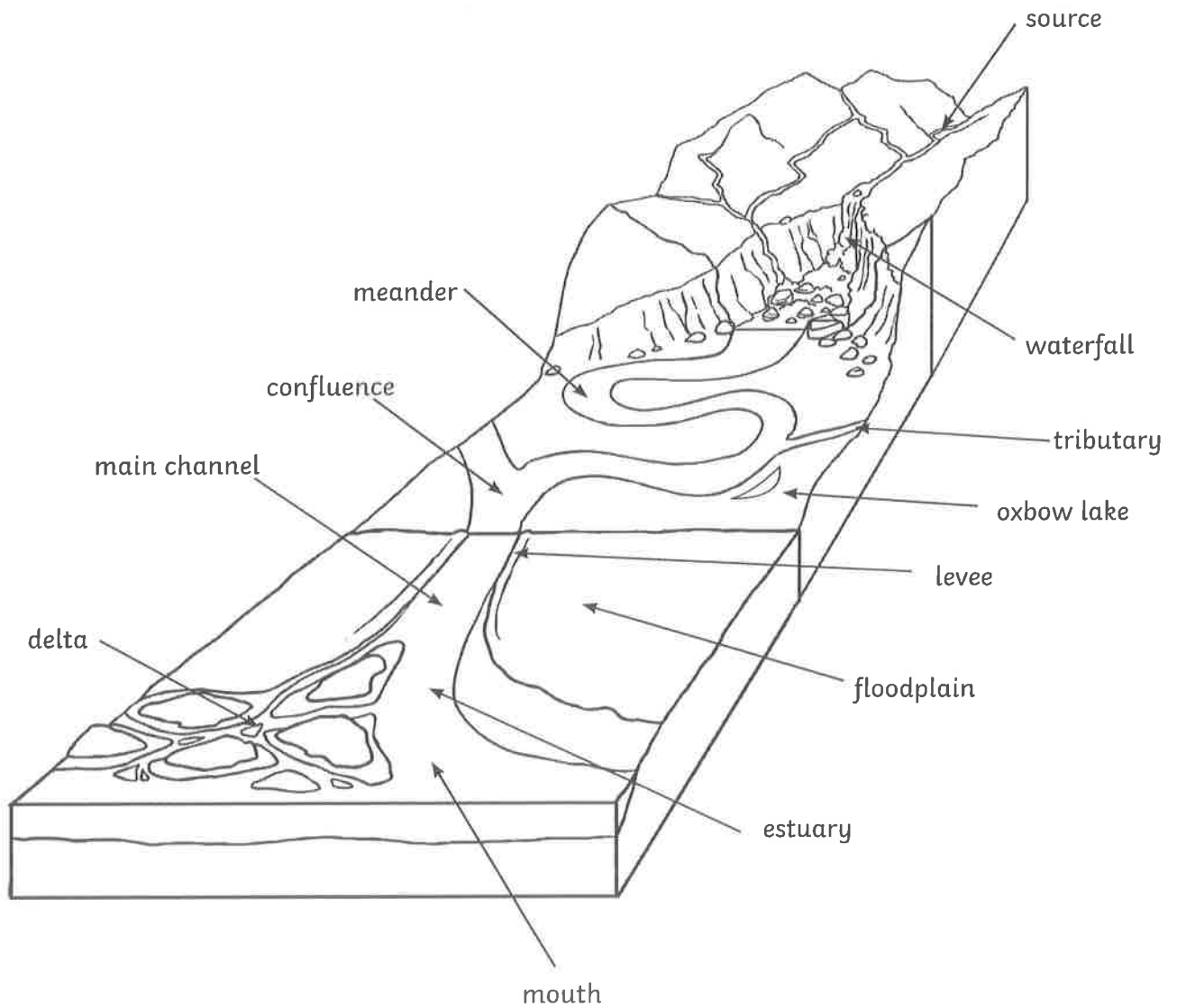
Labelling a River

Use the labels at the bottom of the page to identify each of the parts of the river system.



tributary	confluence	delta	estuary	floodplain	levee
meander	mouth	oxbow lake	source	waterfall	main channel

Labelling a River Answers



Correct the Sentence Punctuation

Write the correct sentence underneath by adding in capital letters, full stops and question marks.

1. my brother's dog is called tess

2. on sunday she went to the park

3. the titanic sank in 1912

4. toby and mark are going to spain in march

5. martha took her children to the zoo yesterday

6. when i go to the shop, i will get some crisps

7. sameera and i are going to town on friday

8. did you sell buns at the fair

9. my mum has a cat he is called tom

10. have you got a dress for the prom

Correct the Sentence Punctuation Answers

Question	Answer
1. my brother's dog is called tess	My brother's dog is called Tess.
2. on sunday she went to the park	On Sunday she went to the park.
3. the titanic sank in 1912	The Titanic sank in 1912.
4. toby and mark are going to spain in march	Toby and Mark are going to Spain in March.
5. martha took her children to the zoo yesterday	Martha took her children to the zoo yesterday.
6. when i go to the shop i will get some crisps	When I go to the shop I will get some crisps.
7. sameera and i are going to town on friday	Sameera and I are going to town on Friday.
8. did you sell buns at the fair	Did you sell buns at the fair?
9. my mum has a cat he is called tom	My mum has a cat. He is called Tom.
10. have you got a dress for the prom	Have you got a dress for the prom?

Correct the Sentence Punctuation

Write the correct sentence underneath by adding in capital letters, full stops, question marks and inverted commas.

1. one warm, sunny day jessica and lilly went to the zoo when they arrived, they visited the monkeys

2. i like the zoo, said jessica lilly looked up and saw a monkey had stolen her lunchbox

3. do we have any money to buy more food asked jessica

4. lilly replied no now we dont have anything for lunch

5. dont worry girls, a voice called from behind them it was the zookeeper, who was holding their lunchbox, with a big smile on his face

Correct the Sentence Punctuation Answers

Question	Answer
1. one warm sunny day jessica and lilly went to the zoo when they arrived they visited the monkeys	One warm, sunny day Jessica and Lilly went to the zoo. When they arrived, they visited the monkeys.
2. i like the zoo said jessica lilly looked up and saw a monkey had stolen her lunchbox	'I like the zoo,' said Jessica. Lilly looked up and saw a monkey had stolen her lunchbox!
3. do we have any money to buy more food asked jessica	'Do we have any money to buy more food?' asked Jessica.
4. lilly replied no now we dont have anything for lunch	Lilly replied 'No! Now we don't have anything for lunch!'
5. dont worry girls a voice called from behind them it was the zookeeper who was holding their lunchbox with a big smile on his face	'Don't worry girls,' a voice called from behind them. It was the zookeeper, who was holding their lunchbox, with a big smile on his face.



Name: _____

Class: _____

Order these fractions from smallest to largest in the space provided.

1	$\frac{1}{12}$	$\frac{1}{4}$	$\frac{1}{6}$	$\frac{1}{2}$	$\frac{1}{11}$	$\frac{1}{8}$
	<input type="text"/>	<input type="text"/>	<input type="text"/>	<input type="text"/>	<input type="text"/>	<input type="text"/>
2	$\frac{2}{12}$	$\frac{7}{12}$	$\frac{3}{12}$	$\frac{11}{12}$	$\frac{8}{12}$	$\frac{5}{12}$
	<input type="text"/>	<input type="text"/>	<input type="text"/>	<input type="text"/>	<input type="text"/>	<input type="text"/>
3	$\frac{3}{9}$	$\frac{6}{9}$	$\frac{8}{9}$	$\frac{1}{9}$	$\frac{7}{9}$	$\frac{4}{9}$
	<input type="text"/>	<input type="text"/>	<input type="text"/>	<input type="text"/>	<input type="text"/>	<input type="text"/>
4	$\frac{1}{7}$	$\frac{1}{8}$	$\frac{1}{12}$	$\frac{1}{3}$	$\frac{1}{2}$	$\frac{1}{4}$
	<input type="text"/>	<input type="text"/>	<input type="text"/>	<input type="text"/>	<input type="text"/>	<input type="text"/>

Look at the fractions and the symbols.
Write the correct symbol in the box.

5	$\frac{1}{2}$	<input type="text"/>	$\frac{1}{4}$	6	$\frac{2}{8}$	<input type="text"/>	$\frac{5}{8}$	7	$\frac{6}{12}$	<input type="text"/>	$\frac{1}{2}$	8	$\frac{5}{6}$	<input type="text"/>	$\frac{2}{8}$
	<	=	>		<	=	>		<	=	>		<	=	>

Which of these fractions are less than, more than or equal to the other?
Circle the correct answers.

9	More than	$\frac{1}{4}$	$\frac{2}{3}$	$\frac{1}{12}$	$\frac{6}{8}$	$\frac{2}{8}$	$\frac{2}{9}$
10	Less than	$\frac{3}{4}$	$\frac{7}{8}$	$\frac{1}{2}$	$\frac{10}{12}$	$\frac{2}{5}$	$\frac{8}{9}$
11	Equal to	$\frac{1}{2}$	$\frac{4}{9}$	$\frac{3}{5}$	$\frac{1}{8}$	$\frac{5}{10}$	$\frac{6}{12}$
12	More than	$\frac{2}{3}$	$\frac{1}{4}$	$\frac{7}{8}$	$\frac{3}{6}$	$\frac{2}{9}$	$\frac{10}{12}$



Name: _____

Class: _____

Order these fractions from smallest to largest in the space provided.

1	$\frac{1}{12}$	$\frac{1}{4}$	$\frac{1}{6}$	$\frac{1}{2}$	$\frac{1}{11}$	$\frac{1}{8}$
	$\frac{1}{12}$	$\frac{1}{11}$	$\frac{1}{8}$	$\frac{1}{6}$	$\frac{1}{4}$	$\frac{1}{2}$
2	$\frac{2}{12}$	$\frac{7}{12}$	$\frac{3}{12}$	$\frac{11}{12}$	$\frac{8}{12}$	$\frac{5}{12}$
	$\frac{2}{12}$	$\frac{3}{12}$	$\frac{5}{12}$	$\frac{7}{12}$	$\frac{8}{12}$	$\frac{11}{12}$
3	$\frac{3}{9}$	$\frac{6}{9}$	$\frac{8}{9}$	$\frac{1}{9}$	$\frac{7}{9}$	$\frac{4}{9}$
	$\frac{1}{9}$	$\frac{3}{9}$	$\frac{4}{9}$	$\frac{6}{9}$	$\frac{7}{9}$	$\frac{8}{9}$
4	$\frac{1}{7}$	$\frac{1}{8}$	$\frac{1}{12}$	$\frac{1}{3}$	$\frac{1}{2}$	$\frac{1}{4}$
	$\frac{1}{12}$	$\frac{1}{8}$	$\frac{1}{7}$	$\frac{1}{4}$	$\frac{1}{3}$	$\frac{1}{2}$

Look at the fractions and the symbols.
Write the correct symbol in the box.

5	$\frac{1}{2}$	$>$	$\frac{1}{4}$	6	$\frac{2}{8}$	$<$	$\frac{5}{8}$	7	$\frac{6}{12}$	$=$	$\frac{1}{2}$	8	$\frac{5}{6}$	$>$	$\frac{2}{8}$	
		$<$	$=$	$>$		$<$	$=$	$>$		$<$	$=$	$>$		$<$	$=$	$>$

Which of these fractions are less than, more than or equal to the other?
Circle the correct answers.

9	More than	$\frac{1}{4}$	$\frac{2}{3}$	$\frac{1}{12}$	$\frac{6}{8}$	$\frac{2}{8}$	$\frac{2}{9}$
10	Less than	$\frac{3}{4}$	$\frac{7}{8}$	$\frac{1}{2}$	$\frac{10}{12}$	$\frac{2}{5}$	$\frac{8}{9}$
11	Equal to	$\frac{1}{2}$	$\frac{4}{9}$	$\frac{3}{5}$	$\frac{1}{8}$	$\frac{5}{10}$	$\frac{6}{12}$
12	More than	$\frac{2}{3}$	$\frac{1}{4}$	$\frac{7}{8}$	$\frac{3}{6}$	$\frac{2}{9}$	$\frac{10}{12}$

Can I find rivers in the UK?

Use your map from UK mountains and locate and plot the course of these rivers:

River Seven

River Wye

River Thames

River Tay

River Trent

River Clyde

River Great Ouse

River Loddon

Make sure you draw their course and label the names of the rivers.

Extension: Can you label any other rivers onto the map?

Rivers Word Search

g	r	s	i	z	t	w	v	h	r	w	j	l	n	p
d	i	h	o	t	e	s	k	h	b	u	v	v	t	n
h	v	s	y	f	l	o	o	d	p	l	a	i	n	n
z	e	o	m	o	u	t	h	x	c	n	w	z	c	h
j	r	u	t	r	i	b	u	t	a	r	y	h	v	v
v	b	r	l	g	l	e	o	a	s	e	n	t	a	k
n	a	c	s	k	w	s	w	h	i	r	s	f	b	s
j	s	e	u	w	a	t	e	r	s	h	e	d	q	s
f	i	s	e	v	h	u	n	h	e	r	u	v	d	r
u	n	q	l	g	w	a	q	a	c	q	v	j	n	u
w	v	m	g	b	a	r	r	r	o	d	a	p	x	l
n	z	u	r	n	e	y	j	z	a	c	l	q	j	w
m	a	m	z	f	j	m	q	s	w	h	l	r	w	e
t	j	o	h	e	o	p	q	d	t	j	e	u	d	k
c	o	n	f	l	u	e	n	c	e	e	y	g	o	n

Clues:

Where the river starts.

The V-shape a river travels down.

A smaller river joining a big river.

The flat land next to a river.

An imaginary line separating one river from the next.

The point where the river meets the sea.

The area where freshwater mixes with salty sea water.

Rain falling inside this will drain into the river.

Where two rivers join together.

Rivers Word Search Answers

g	r	s	i	z	t	w	v	h	r	w	j	l	n	p
d	l	h	o	t	e	s	k	h	b	u	v	v	t	n
h	v	s	y	f	l	o	o	d	p	l	a	i	n	n
z	e	o	m	o	u	t	h	x	c	n	w	z	c	h
j	r	u	t	r	i	b	u	t	a	r	y	h	v	v
v	b	r	l	g	l	e	o	a	s	e	n	t	a	k
n	a	c	s	k	w	s	w	h	i	r	s	f	b	s
j	s	e	u	w	a	t	e	r	s	h	e	d	q	s
f	l	s	e	v	h	u	n	h	e	r	u	v	d	r
u	n	q	l	g	w	a	q	a	c	q	v	j	n	u
w	v	m	g	b	a	r	r	r	o	d	a	p	x	l
n	z	u	r	n	e	y	j	z	a	c	l	q	j	w
m	a	m	z	f	j	m	q	s	w	h	l	r	w	e
t	j	o	h	e	o	p	q	d	t	j	e	u	d	k
c	o	n	f	l	u	e	n	c	e	e	y	g	o	n

Clues:

Where the river starts.

The V-shape a river travels down.

A smaller river joining a big river.

The flat land next to a river.

An imaginary line separating one river from the next.

The point where the river meets the sea.

The area where freshwater mixes with salty sea water.

Rain falling inside this will drain into the river.

Where two rivers join together.